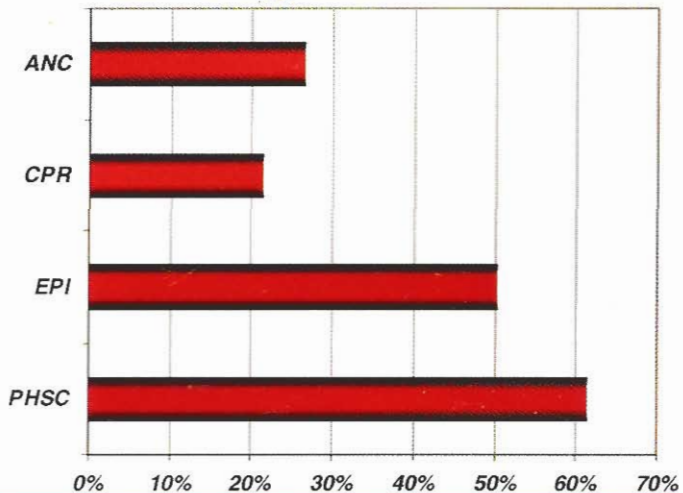




በኢትዮጵያ ፌዴራላዊ ዲሞክራሲያዊ ሪፐብሊክ
የጤና ጥበቃ ሚኒስቴር
Federal Democratic Republic of Ethiopia
Ministry of Health

Health and Health Related **INDICATORS**

1
9
9
5



Planning and Programming Department, FMOH

Health and Health Related **INDICATORS**

1995 E.C. (2002/03 G.C.)

Planning and Programming Department

Health Information Processing & Documentation Team

Explanatory Notes

All years in this annual publication, unless otherwise stated, are in Ethiopian calendar.

The following symbols have been used in the tables throughout the report:

- A blank in a table indicates that the item is not applicable.
- A number in parenthesis () indicates a negative number.
- NA in a table indicates data is not available

Copyright © Planning and Programming Department, MOH

February 2004

Fax: (251)(1)512691

Phone: (251)(1)535938, 505797, 536294

e-mail: moh@telecom.net.et

PREFACE

One of the basic characteristic of the Health Sector Development Programme (HSDP) is its effectiveness in the planning, implementation and monitoring of the health sector activities. The growing need for careful planning, strong implementation and systematic monitoring has given more significance to the availability of adequate and timely information.

Much effort have been put to improve the quality and scope of the data used in this issue. Current and previous years coverage indicators that needed population data have been adjusted based on “The 1994 Population and Housing Census of Ethiopia, Volume II Analytical Report.”

It is hoped that this publication will serve as a useful and quick reference for policy markers and planners as one of the tools for the design of future development plan, monitoring and evaluation. It is also hoped that this publication will meet the needs of researchers and those interested in the health sector.

Among the sources of information used for the preparation of this publication are:

1. Regional Annual Reports
2. Departments of FMOH, Central Specialized Hospitals
3. The 1994 (G.C) population and Housing Census of Ethiopia, Analytical Reports
4. The Ethiopian Population Profile: 2002 G.C.
5. Educational Statistics: Annual Abstract, 2002/03
6. Socio-economic & Financial Data: MOFED
6. International Health Related Publications
7. Non-Governmental Organizations

As part of its main activities, the Planning and Programming Department will continue to update the publication annually.

Comments and suggestions are welcome and should be addressed to:

Planning and Programming Department

P.O. Box 1234

Ministry of Health

Acknowledgements are due to all those, whose invaluable comments and suggestions have made it possible the completion of this publication on time.

Health Information Processing & Documentation Team

ACRONYMS

ADD	Acute Diarrhea Diseases
AIDS	Acquired Human Immunodeficiency Syndrome
AFP	Acute Flaccid Paralysis
ARI	Acute Respiratory Infection
BCG	Bacille Calmette Guerin
B. Dysentery	Bacillary Dysentery
BS	Both Sexes
BMI	Body Mass Index
CSA	Central Statistical authority
CBR	Crude Birth Rate
CDR	Crude Death Rate
CHA	Community Health Agent
CMR	Child mortality Rate
CPR	Contraceptive Prevalence Rate
DOTS	Daily Observed Therapy Short Course
DPT	Diphtheria, Pertusis and Tetanus
ENT	Ear, Nose & Throat
EPI	Expanded Programme on Immunization
ETB	Ethiopian Birr
FGAE	Family Guidance association of Ethiopia
FMOH	Federal Ministry of Health
GDP	Gross Domestic Product
GNI PPP	Gross National Income in purchasing power parity
G. Worm	Guinea Worm
HC	Health Center
HCU	Health Care Unit
HH	House Hold
HIV	Human Immunodeficiency Virus
HP	Health Post
HSDP	Health Sector Development Programme
IMR	Infant Mortality Rate
IDS	International Disease Surveillance
IUCD	Intra Uterine Contraceptive Device
LB	Live Birth
LE	Life Expectancy

MB	Multibacillary
MCH	Maternal and Child Health
MDT	Multiple Drug Therapy
M. Meningitis	Meningococcal Meningitis
NGO	Non Governmental Organization
NNT	Neonatal Tetanus
Ob.Gyn	Obstetric & Gynecology
OGA	Other Government Agency
OPD	Out-patient Department
OPV	Oral Polio vaccine
PB	Paucibacillary
PF	Plasmodium Falciparum
PHCU	Primary Health Care Unit
PHSC	Potential Health Service Coverage
PM	Plasmodium Malaria
PV	Plasmodium Vivax
R. Fever	Relapsing Fever
RNI	Rate of Natural Increase
SNNPR	Southern Nations & Nationalities Peoples Region
STD	Sexually Transmitted Disease
TB	Tuberculosis
TBA	Traditional Birth Attendant
TFR	Total Fertility Rate
TT	Tetanus Toxoid
USD	US Dollar
WHO	World Health Organization

TABLE OF CONTENTS

Preface	i
Acronyms	iii
Introduction	1
1. Summary Of Basic Health Indicators	3
2. Major Health Sector Development Targets	5
3. Demography & Vital Statistics	7
3.1 Some Demographic Indicators, 1995	7
3.2 Vital Statistics, 1993– 1998 (2000—05 G.C.)	8
3.3 Demographic Data & Estimates for Some Countries & Regions of the World	9
4. Education & Economic Statistics	11
4.1 School Age Population, Enrollment And Gross Enrollment Ratios By Region And Sex, 1995.....	11
4.2 Socio-Economic Data, 1987-1995	12
5. Maternal & Child Health Services	13
5.1 Immunization Coverage By Antigen, 1995.....	13
5.2 Drop-out Rates of Routine EPI Activity, 1995	15
5.3 TT2+ Achievement & Coverage By Region, 1995.....	16
5.4 Maternal Health Services Achievement & Coverage By Region, 1995.....	17
5.5 Nutritional Status of Children & Mothers.....	18
5.6 Amount of Contraceptive Distributed by type of Contraceptive Method, 1995.....	19
5.7 Percentage of Contraceptive Users by Type of Contraceptive Method	20
6. Hygiene & Environmental Health Service	21
6.1 Hygiene & Environmental Health Profile by Regions, 1994.....	21
6.2 Global Hygiene & Environmental Health Service Indicators	22
7. Health Infrastructure	23
7.1 Potential Health Service Coverage And Visit Per Capita, 1995	23
7.2 Distribution Of Health Infrastructure, 1995.....	24
7.3 Distribution of Hospitals by Type and Ownership, 1995.....	25
7.4 Distribution Of Private Owned Clinics by Type and Region, 1995.....	25
7.5 Distribution Of Pharmaceutical Retail Outlets By Region & Ownership, 1995.....	26

7.6	Health Facility Construction, Rehabilitation & Expansion, 1995	27
8.	Human Resources	28
8.1	Health Human Resource Distribution By Region & Sex.....	28
8.2	Distribution of Physicians By Specialization & Region.....	29
8.3	Distribution of Nurses By Specialty, Region & Sex.....	30
8.4	Health Professionals Population Ratio By Region	31
9.	Budget Allocation & Expenditure.....	32
9.1	Recurrent Health Budget Allocation & Expenditure By Region, 1995.....	32
9.2	Capital Health Budget Allocation & Expenditure By Region, 1995	32
9.3	Health Expenditure Per Capita By Region, 1995	33
9.4	National Recurrent Budget Allocation & Expenditure 1980-1995.....	33
9.5	National Capital Budget Allocation & Expenditure 1980-1995.....	34
9.6	National Government Health Expenditure per Capita (ETB), 1995.....	34
10.	Disease Statistics	35
10.1	Outpatient Visit per Capita	35
10.2	Number of Inpatients, Days, Deaths & Beds, 1995	36
10.3	Diagnostic Services, 1995.....	37
10.4	Major & Minor Surgery Performed by Regions, 1995	38
10.5	Top 10 Leading Causes, 1995.....	39
10.5.1	Top 10 Leading Cause of Outpatient Visit	39
10.5.2	Top 10 Leading Cause of Admission.....	40
10.5.3	Top 10 Leading Cause of Deaths	41
10.6	Malaria Cases by Parasite Species	42
10.7	Tuberculosis and Leprosy	44
10.7.1	Tuberculosis Case Findings, 1995	44
10.7.5	Leprosy Case findings, 1995.....	47
10.8	National Surveillance System and Epidemic Report, 1995	48
10.8.1	Annual Report of Epidemic Diseases, 1995	48
10.8.2	IDS Report, 1995	49
10.9	Regional Reported HIV/ AIDS Cases.....	50
11.	Output From Health Professional Training School.....	51
11.1	Summary of Graduates.....	51
11.2	Distribution of Health Training Schools.....	52
11.3	Post Basic and Post Graduates	55
	Glossary.....	56

INTRODUCTION

The land area of Ethiopia is estimated at about 1.1 million square kilometers and the current population is approximately 69.1 million, of which more than 85.0 percent live in rural areas. Ethiopia is a Federal Democratic Republic composed of 9 National Regional States (NRS): Tigray, Afar, Amhara, Oromia, Somalia, Benishangul-Gumuz, Southern Nations, Nationalities and Peoples Region (SNNPR), Gambella and Harari, and two Administrative states (Addis Ababa city administration and Dire Dawa council)

The National Regional States as well as the two city administrative councils are further divided into five hundred eighty woredas and to around 15,000 kebeles (5,000 urban & 10,000 rural).

An estimated 60 to 80 percent of health problems are due to infectious and communicable diseases and nutritional problems. The health care system is underdeveloped and only able to provide basic service to about 61% of the population. Much of the rural population has little access to modern health care, that lead to the inability of the health care delivery systems to respond both quantitatively and qualitatively to the health needs of the people. Previously, the health delivery system was highly centralized; delivered in a fragmented way and relied on vertical programs; and there was little collaboration between the public and private sectors. Consequently, the Ethiopian Transitional and Federal Governments have initiated political, economic and social changes resulting in the formulation of the 1985 Health Policy and Strategy. The Federal Government and the regional authorities are trying to reorganize health services into a more cost-effective and efficient system better able to contribute to the overall socio-economic development effort of the country.

The Government Health Sector Development plan is to realize its health development objective through a twenty-year health sector development strategy, with a five-year rolling investment programs, with first Health Sector Development Program (HSDPI) covering periods 1990 - 1994. This has been followed by the second HSDP covering 1995-1997.

Both HSDPI & II are intimately linked to PRSP of the country, & like the National Health Policy, are the result of a critical examination of the nature, magnitude and root causes of the prevailing health problems of the country and awareness of newly emerging health problems. Founded on a commitment to democratic principles and to decentralized management and provision of service, it accords appropriate emphasis to the needs of the less privileged rural population which constitute the overwhelming majority of the population and it also sets realistic goals and the means for attaining them. In so doing, the Government accords health a prominent place in its order of priorities and commits itself to the attainment of these goals accessing through the proper utilization of both internal and external resources.

The Federal Ministry of Health has planned to develop health specific software package to facilitate & get more reliable information from all regions after taking critical assessment & standardization of the reporting format at all levels. In the last two years special emphasis was also given to incorporate the service provided by private health institutions.

It is to be noted that some of the incomplete data from few regions may have underestimated the Health Service Utilization Rate of the country. In this particular publication which stands at 0.29 visit per person per year (the plan was to reach 0.30 visit per person per year by 1995). The contraceptive prevalence rate from the private sector has only been reported from Addis Ababa city administration.

1. SUMMARY OF BASIC HEALTH INDICATORS

Indicator	1991	1992	1993	1994	1995
Total Population	61,672,000	63,495,000	65,344,000	67,220,000	69,127,021
PHS Coverage (%)	57.3	57.3	59.1	61.0	61.3
PHS Coverage (%)*	65.1	66.1	68.0	70.7	70.2
EPI Coverage (%)**	38.4	41.9	41.9	51.5	50.4
Health Service Utilization	0.27	0.27	0.27	NA	0.29
CPR (%)***	7.9	13.3	18.7	17.2	21.5
Antenatal Coverage (%)	25.5	29.1	34.7	34.1	27.4
Number of Facilities					
Hospitals	100	103	110	115	119
Health Centers	304	356	382	412	451
Health Stations	2268	2330	2393	2452	2396
Health Posts	1012	833	1023	1311	1432
Private Clinics	966	1119	1170	1235	1229
Pharmacies	272	304	311	311	302
Drug Shops	243	250	249	309	299
Rural Drug Vendors	1858	1950	1917	1856	1888
Human Resources (at service)					
Physicians	1283	1263	1366	1888	2032
Health Officers	144	201	296	484	631
Nurses	5498	6713	7723	12838	14160
Health Assistants	10641	8330	7386	8149	6856
Para Medicals	1989	2201	2758	3824	4641
Human Resources (Graduate)					
Specialists	46	58	61	91	103
General Practitioners	136	152	128	152	182
Health Officers	79	157	181	183	181
Nurses	1416	1399	2164	1562	1465
Para Medicals	613	671	917	656	1054

* The Coverage includes the service provided by Private Health Facilities.

** Coverage is calculated using DPT3 only.

*** Services outside the government health institutions included only for Addis Ababa, Hareri & Benishangul.

Fig.1 Basic Health Service Indicators

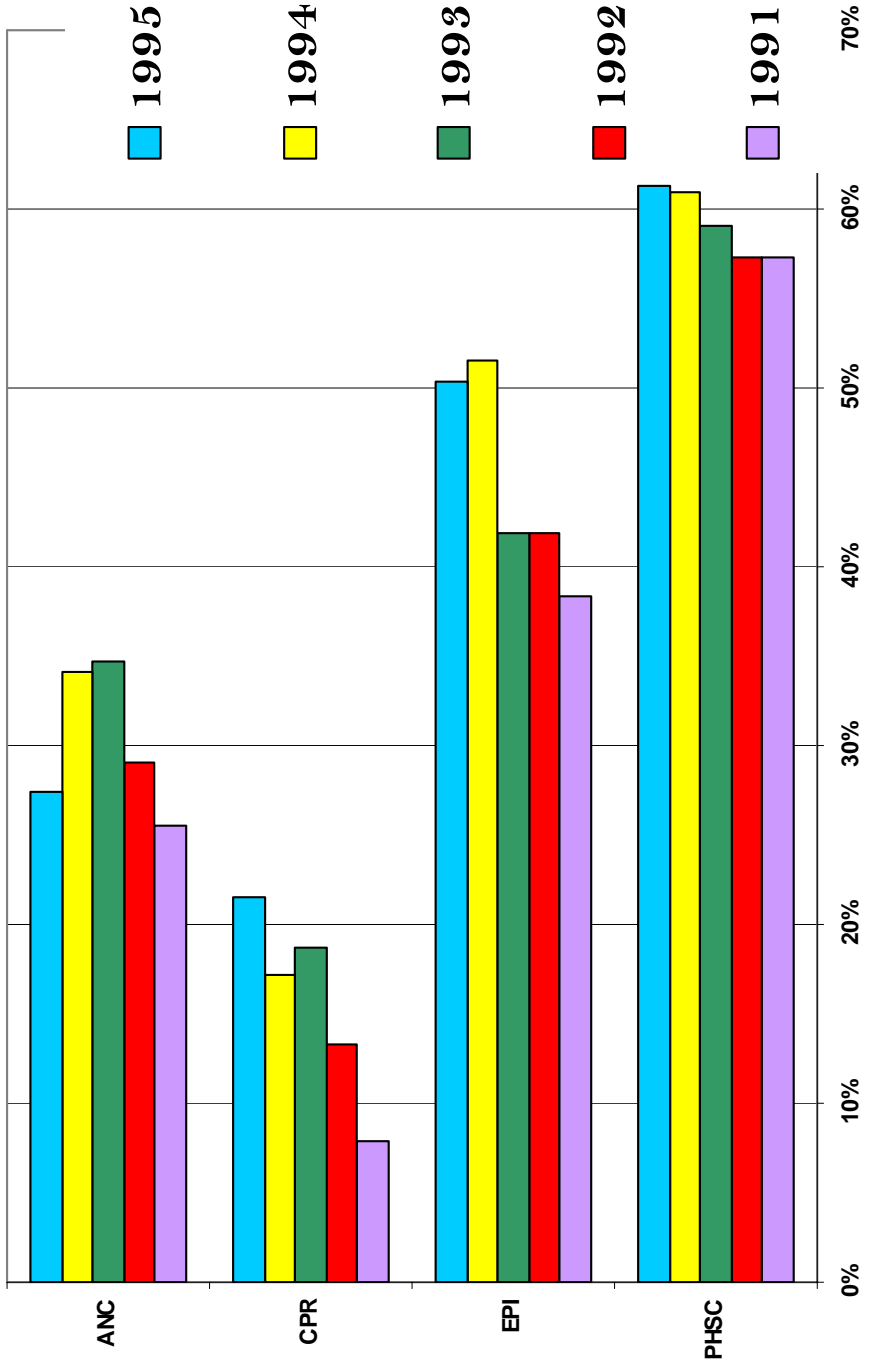
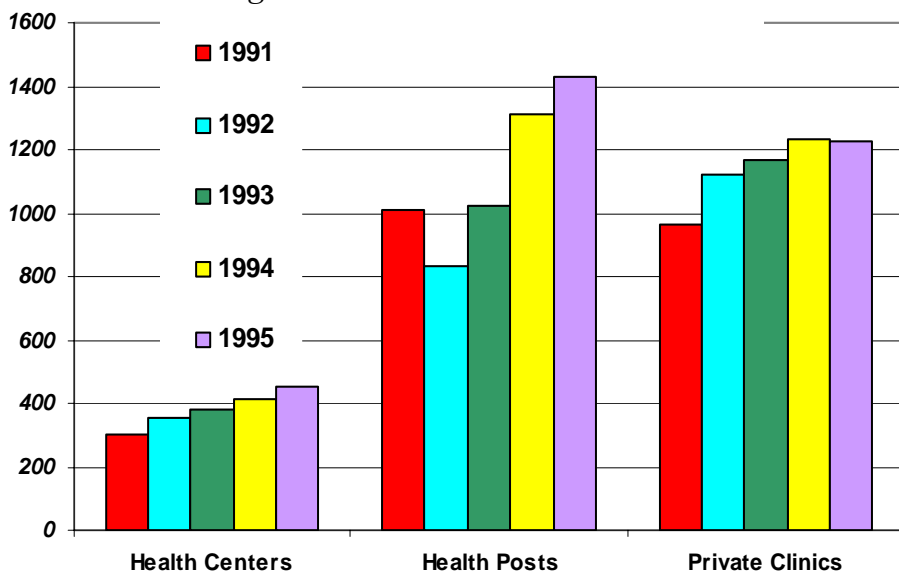


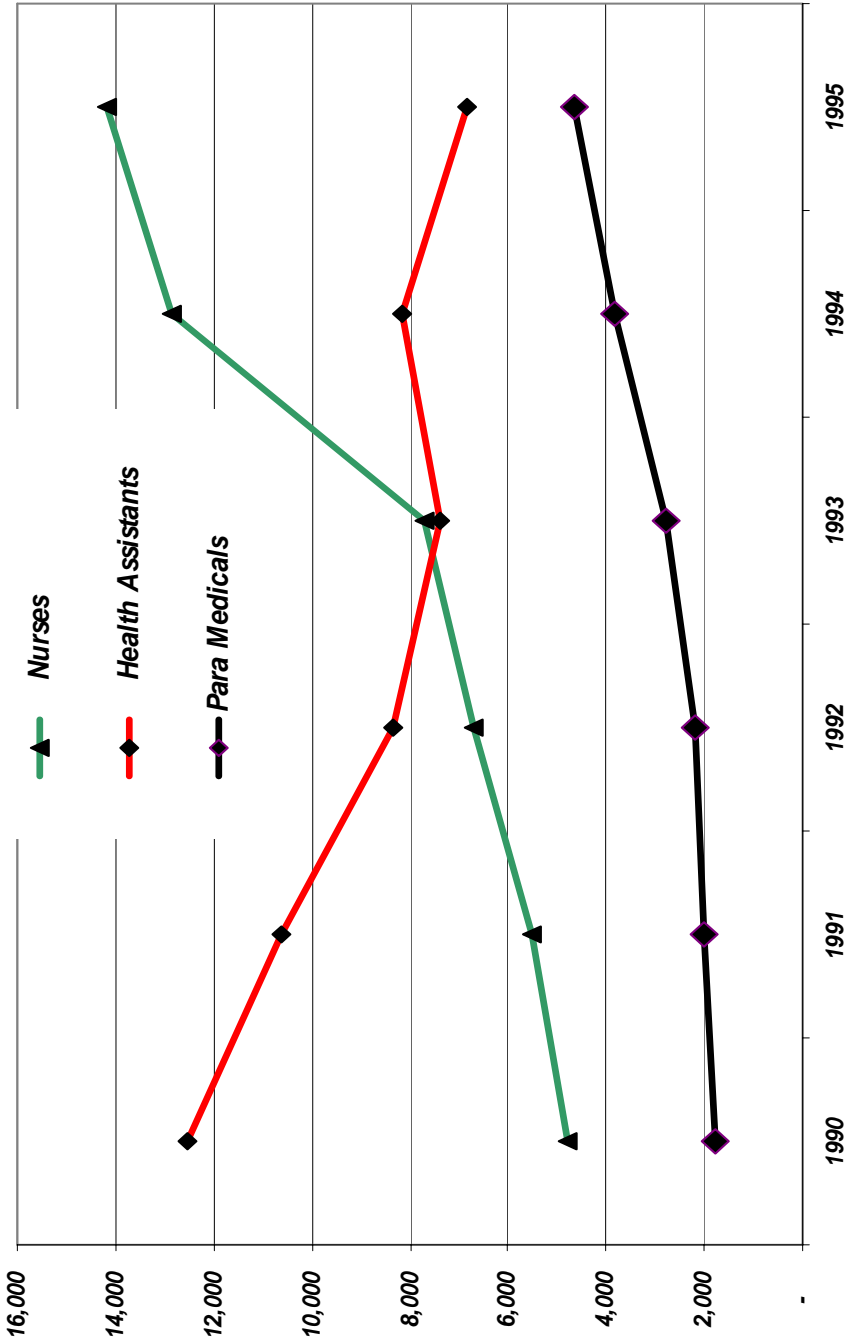
Fig. 2 Distribution of Health facilities



2. MAJOR HEALTH SECTOR DEVELOPMENT TARGETS (1995-1997)

Indicators	Target
Contraceptive coverage rate	24%
ANC coverage	45%
EPI coverage	70%
Coverage of TT2 to pregnant women	70%
Coverage of TT2 to non-pregnant women	32%
Post-natal service coverage	20%
Proportion of deliveries assisted by trained health workers	25%
Share of the annual health budget	8.2%
Coverage of tuberculosis prevention and control service	75%
Proportion of safe and adequate water supply	42%
Proportion of the population with access to excreta disposal facilities	35%
Availability of essential drugs and medical supplies in each health facility	80%
Drugs prescribed in generic name	92%
Per capita expenditures on health	6.0 USD
Blindness prevalence rate	0.6 / 10,000
HIV prevalence rate	< 7%
EPI defaulters	<10%
Defaulter rates of TB & leprosy	0%

Fig. 3 Availability of Health Personnel by Selected Professional Categories



3. DEMOGRAPHY & VITAL STATISTICS

3.1 SOME DEMOGRAPHIC INDICATORS, 1995

Region	Population						Dependency Ratio %	Pop. Density Per Km ²	Average HH Size*	
	Both Sexes	Sex Ratio	Urban %	Under One %	Surviving Infants %	Under Three %				Under Five %
Tigray	4,006,008	97.0	17.8	3.6	3.6	7.3	17.7	24.0	80.0	4.3
Afar	1,301,001	126.3	8.6	3.0	2.9	6.2	14.9	22.9	-	5.7
Amhara	17,669,006	100.0	10.9	3.5	3.5	7.2	17.4	24.0	111.0	4.5
Oromia	24,395,000	99.6	12.5	3.7	3.7	7.6	18.3	23.9	69.1	4.8
Somali	4,002,000	116.9	16.0	3.3	3.3	6.7	15.8	23.5	-	6.6
Ben.-Gumuz	580,000	101.4	9.3	3.7	3.6	7.1	17.1	24.8	11.8	4.5
SNNPR	13,686,002	98.8	8.1	3.8	3.8	7.7	18.6	24.5	121.9	4.7
Gambella	228,002	103.6	18.0	3.2	3.1	6.5	15.5	27.7	8.9	4.5
Hareri	178,000	102.3	61.2	3.2	3.1	6.6	15.5	27.6	571.9	4.3
Addis Ababa	2,725,002	92.6	100.0	2.3	2.1	4.6	10.2	35.3	5,140.2	5.1
Dire Dawa	357,000	100.6	73.1	3.4	3.3	7.0	16.5	28.6	294.3	4.7
National	69,127,021	100.5	15.5	3.6	3.5	7.3	17.5	24.5	55.2	4.8

Source: The 1994 G.C. Population and Housing Census of Ethiopia, Analytic Report (CSA)

* Average House Hold Size was indicated for the year 1994 G.C.

3.2 VITAL STATISTICS, 1993-1998 (2000-05 G.C.)

Region	CBR per 1000	CDR per 1000	RNI (%)	*TFR	IMR per 1000	*CMR per 1000	Under 5 MR per 1000	Male LE	Female LE
Tigray	40.4	13.7	2.7	5.8	102.0	73.0	148.0	52.0	54.9
Afar	33.8	11.6	2.2	4.9	99.0	114.9	145.0	56.9	50.8
Amhara	39.5	12.8	2.7	5.9	96.0	80.0	138.0	53.4	56.0
Oromia	41.6	12.9	2.9	6.4	98.0	87.9	142.0	53.0	55.5
Somali	36.1	9.8	2.6	5.7	83.0	94.2	119.0	58.7	55.4
Benishangul	40.0	14.6	2.5	5.4	117.0	111.0	173.0	50.1	51.1
SNNPR	42.6	13.4	2.9	5.9	107.0	88.2	157.0	51.4	53.5
Gambella	34.8	9.1	2.6	4.5	80.0	126.0	113.0	57.6	58.3
Hareri	35.6	12	2.4	4.4	93.0	82.4	135.0	55.6	54.7
Addis Ababa	22.7	7.6	1.5	1.9	61.0	35.4	83.0	60.3	64.1
Dire Dawa	37.0	11.7	2.5	3.6	94.0	78.4	136.0	54.1	55.8
National	39.9	12.6	2.7	5.9	96.8	84.5	140.1	53.4	55.4

N.B. Maternal Mortality Rate of the Country is estimated to be 871 per 100,00 live births, but figures are not disaggregated by regions.

Source: The 1994 Population and Housing Census of Ethiopia, Analytic Report (CSA)

* Demographic & Health Survey, 2000

3.3 DEMOGRAPHIC DATA & ESTIMATES FOR SOME COUNTRIES & REGIONS OF THE WORLD

	Population (*Millions)	CBR	CDR	RNI (%)	Projected Population (*Millions)		IMR	TFR	% of Population of Age			LE at Birth (Years)			% of Pop. 15-49 With HIV/AIDS End-2001	GNI PPP Per Capita, 2000, (USD)
					2025	2050			<15	65+	BS	M	F			
World	6,314	22	9	1.3	7,907	9,198	55	2.8	30	7	67	65	69	1.2	\$7,160	
More Developed	1,202	11	10	0.1	1,260	1,257	7	1.5	18	15	76	72	79	0.4	22,030	
Less Developed	5,112	24	8	1.6	6,647	7,940	61	3.1	33	5	65	63	66	1.4	3,660	
Less Developed (Excl. China)	3,823	28	9	1.9	5,192	6,547	65	3.5	36	4	63	61	64	1.9	3,570	
Africa	861	38	14	2.4	1,289	1,883	88	5.2	42	3	52	51	53	6.5	\$2,120	
Sub-Saharan Africa	711	40	16	2.5	1,084	1,636	93	5.6	44	3	48	47	49	8.9	1,710	
Northern Africa	188	27	7	2.1	267	331	51	3.6	37	4	67	65	68	0.6	3,600	
Western Africa	256	41	15	2.7	402	617	88	5.8	45	3	51	50	51	4.9	1,060	
Eastern Africa	263	41	17	2.4	395	590	102	5.6	45	3	44	43	45	9.5	960	
Burundi	6.1	40	19	2.2	10.1	15.4	75	6.3	48	3	43	42	44	8.3	680	
Comoros	0.6	47	12	3.5	1.1	1.8	86	6.8	46	5	56	54	59	0.1	1,890	
Djibouti	0.7	39	19	2.0	0.8	1.1	117	5.9	43	3	43	42	44	11.8	2,420	
Eritrea	4.4	41	13	2.8	7	10.5	48	5.9	44	3	54	52	57	2.8	1,030	
Ethiopia	69.1	40	13	2.7	117.6	173.3	97	5.9	44	3	54	53	55	6.4	800	
Kenya	31.6	35	15	2.0	35.3	40.2	66	4.4	44	3	46	46	46	15.0	970	
Madagascar	17	43	13	3.0	33	65.5	85	5.8	45	3	55	53	57	0.3	820	
Malawi	11.7	47	22	2.6	17.7	29	108	6.5	46	3	39	39	40	15.0	560	
Mauritius	1.2	16	7	0.9	1.4	1.5	14.1	1.9	25	6	72	68	75	0.1	9,860	
Mayotte	0.2	41	9	3.2	0.4	0.6	NA	5.0	47	2	60	57	62	NA	NA	
Mozambique	17.5	41	28	1.3	17.5	19	201	5.1	45	3	34	33	34	13.0	1,050	
Reunion	0.8	21	5	1.6	0.9	1	27	2.5	27	7	75	71	79	NA	NA	
Rwanda	8.3	40	21	1.9	11.7	17.3	107	5.8	43	3	40	39	41	8.9	1,240	
Seychelles	0.1	18	7	1.2	0.1	0.1	10	2.1	29	8	70	67	73	NA	NA	

Cont. ...

Cont.

	Population ('Millions)	CBR	CDR	RNI (%)	Projected Population ('Millions)		IMR	TFR	% of Population of Age			LE at Birth (Years)			% of Pop. 15-49 With HIV/AIDS E nd-2001	GNI PPP Per Capita, 2000, (USD)
					2025	2050			<15	15-64	65+	BS	M	F		
Somalia	8	48	19	2.9	14.9	25.5	126	7.2	45	3	46	45	48	1.0		
Tanzania	35.4	40	17	2.3	52	73.8	105	5.3	45	3	45	44	46	7.8	520	
Uganda	25.3	47	17	3.0	47.3	82.5	88	6.9	51	2	44	43	46	5.0	1,460	
Zambia	10.9	43	21	2.2	13.6	17.5	95	5.9	47	3	41	41	40	15.6	750	
Zimbabwe	12.6	32	20	1.2	12.8	14.6	65	4.0	40	3	41	43	40	33.7	2,220	
Middle Africa	104	45	16	2.9	184	305	104	6.4	44	3	47	46	49	6.3	1,020	
Southern Africa	50	24	14	1.0	41	39	59	3.0	35	5	52	51	52	21.5	10,240	
Northern Africa	323	14	8	0.5	387	459	7	2.0	21	13	77	75	80	0.6	\$33,510	
Latin America & The Caribbean	540	23	6	1.7	690	789	29	2.7	32	6	71	68	74	0.7	6,820	
Central America	144	29	5	2.4	192	230	27	3.0	35	5	74	71	76	0.5	7,150	
Caribbean	38	20	8	1.2	46	51	38	2.7	29	7	69	67	71	2.4		
South America	358	22	6	1.5	452	507	30	2.5	31	6	70	67	74	0.6	\$6,910	
Asia	3,830	20	7	1.3	4,776	5,353	54	2.6	30	6	67	66	69	0.4	\$4,290	
Asia (excl. China)	2,541	24	8	1.6	3,322	3,959	60	3.1	34	5	65	64	67	0.5	4,470	
Western Asia	204	27	7	2	308	418	47	3.8	36	5	68	66	70		5,550	
South Central Asia	1,563	27	9	1.8	2,084	2,546	69	3.3	37	4	62	62	63	0.6	2,700	
Southeast Asia	544	22	7	1.6	697	792	41	2.7	31	5	68	66	70	0.6	3,390	
East Asia	1519	13	7	0.6	1688	1597	29	1.7	22	8	72	70	74	0.1	6,090	
Europe	727	10	12	-0.2	722	664	8	1.4	17	15	74	70	78	0.4	\$16,270	
Northern Europe	95	11	10	0.1	101	101	5	1.6	19	16	78	75	80	0.1	23,620	
Western Europe	185	11	10	0.1	187	177	4	1.6	17	16	79	75	82	0.2	25,430	
Eastern Europe	301	9	14	-0.5	285	247	13	1.2	18	13	68	63	74	0.6	7,170	
Southern Europe	147	10	9	0.1	149	138	6	1.3	16	17	78	75	81	0.4	18,610	
Oceania	32.0	18	7	1.0	40.0	46.0	30	2.5	25	10	75	73	77	0.2	18,770	

Source: 2003 World Population Data Sheet of the Population Reference Bureau (PRB) Book Edition, August 2003 G.C.

N.B. All years are indicated in G.C.

4. EDUCATION & ECONOMIC STATISTICS

4.1 SCHOOL AGE POPULATION, ENROLLEMENT AND GROSS ENROLLEMENT RATIOS BY REGION AND SEX , 1995

A. Primary (Grade 1-8)

Region	School Age Population (7-14)		Enrollment		Gross Enrollment Ratio	
	Both Sexes	Female	Both Sexes	Female	Both Sexes	Female
Tigray	803,329	395,481	591,692	289,123	73.7	73.1
Afar	246,938	107,199	34,175	12,275	13.8	11.5
Amhara	3,479,716	1,725,506	2,034,497	930,241	58.5	53.9
Oromiya	4,904,552	2,431,500	3,283,307	1,239,488	66.9	51.0
Somali	817,864	373,248	123,541	37,500	15.1	10.0
Benshangul	117,188	57,286	115,324	42,695	98.4	74.5
SNNPR	2,731,360	1,355,386	1,959,788	747,363	71.8	55.1
Gambella	41,022	19,853	51,131	18,531	124.6	93.3
Harari	27,113	13,192	28,663	11,766	105.7	89.2
Addis Ababa	352,766	181,460	477,536	252,567	135.4	139.2
Dire Dawa	55,485	27,229	43,611	18,794	78.6	69.0
National	13,577,333	6,687,340	8,743,265	3,600,343	64.4	53.8

B. Secondary (Grade 9-10)

Region	School Age Population (15-16)		Enrollment		Gross Enrollment Ratio	
	Both Sexes	Female	Both Sexes	Female	Both Sexes	Female
Tigray	175,684	86,795	46,113	17,052	26.2	19.6
Afar	59,432	24,644	3,007	1,125	5.1	4.6
Amhara	760,670	375,901	96,044	37,118	12.6	9.9
Oromiya	1,074,171	530,615	204,857	66,009	19.1	12.4
Somali	195,713	86,105	6,434	1,941	3.3	2.3
Benshangul	25,802	12,674	5,035	1,522	19.5	12.0
SNNPR	595,497	294,901	111,596	34,666	18.7	11.8
Gambella	9,903	4,829	3,334	624	33.7	12.9
Harari	7,292	3,652	4,090	1,566	56.1	42.9
Addis Ababa	125,987	69,240	98,392	49,979	78.1	72.2
Dire Dawa	14,711	7,694	7,407	3,158	50.4	41.0
National	3,044,862	1,497,050	586,309	214,760	19.3	14.3

Source: Education Statistics Annual Abstract 1995, December 2003 G.C.(MOE)

4.2 SOCIO-ECONOMIC DATA, 1987-1995

‘Million ETB.

Sr. No.	ECONOMIC INDICATORS	1987 1994/95	1988 1995/96	1989 1996/97	1990 1997/98	1991 1998/99	1992 1999/2000	1993 2000/2001	1994 2001/2002	1995 2002/2003
1	Gross Domestic Expenditure	36,936.9	41,689.4	45,319.2	49,064.6	56,028.8	61,141.5	62,422.8	61,442.8	69587.2
2	Consumption Expenditure	31,367.9	35,285.0	38,270.1	41,374.0	47,758.7	52,709.7	52,776.8	50,829.3	57494.2
	Government	4,021.2	4,239.7	4,526.3	6,251.4	9,127.0	12,668.3	10,882.1	11,600.3	12318.4
	Private	27,346.7	31,045.3	33,743.8	35,122.6	38,631.7	40,041.4	41,894.7	39,229.0	45175.8
3	Gross Domestic Saving	2,517.1	2,652.6	3,195.0	3,466.3	1,044.6	480.1	1,433.9	931.4	(893.1)
4	Gross Capital Formation	5,569.0	6,404.4	7,049.1	7,690.6	8,268.1	8,431.8	9,646.0	10,613.5	12093.0
5	GDP at Current Market	33,885.0	37,937.6	41,465.1	44,840.3	48,803.3	53,189.8	54,201.7	51,760.7	56601.1
6	GDP at Constant Factor Cost	12,644.3	13,930.9	14,640.2	14,429.0	15,294.1	16,112.3	17,354.4	17,567.0	16903.9
	Growth Rate (%)	5.4	10.2	5.1	(1.4)	6.0	5.3	7.7	1.2	(3.8)
7	Health at Constant Factor Cost	146.5	154.0	160.1	175.9	187.6	186.5	201.5	215.8	235.2
	Growth Rate (%)	7.1	5.1	4.0	9.9	6.7	(0.6)	8.0	7.1	9.0

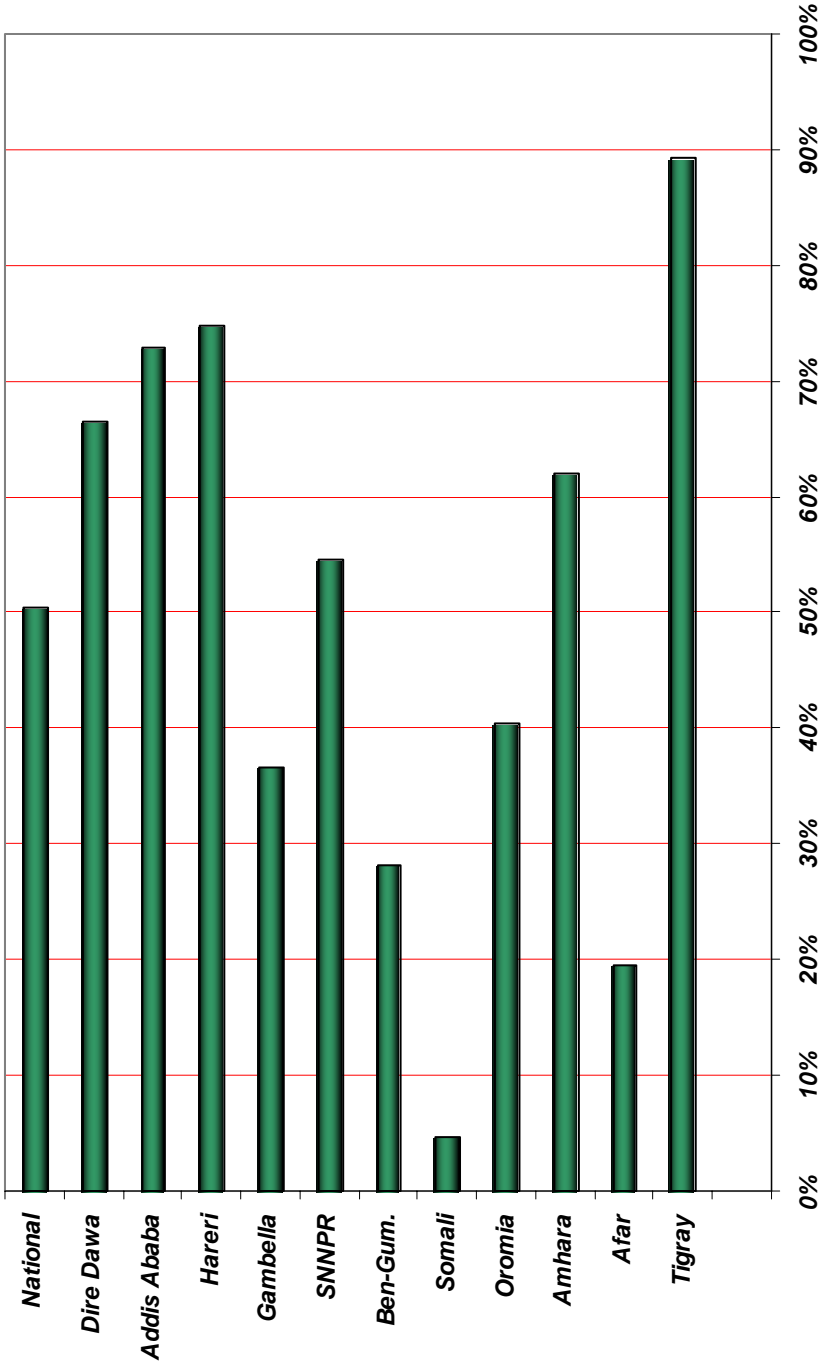
Source: Ministry of Finance & Economic Development

5. MATERNAL & CHILD HEALTH SERVICES

5.1 IMMUNIZATION COVERAGE BY ANTIGEN, 1995

Region	Target Population (Under 1 yr)	BCG		Surviving Infants	DPT ₃		Measles		Fully Immunized	
		Achieved	Cov.		Achieved	Cov.	Achieved	Cov.	Achieved	Cov.
Tigray	144,528	142,249	98.42	145,076	129,534	89.29	121,169	83.52	107,160	73.86
Afar	39,558	10,555	26.68	38,292	7,496	19.58	8,725	22.79	NA	NA
Amhara	626,968	406,828	64.89	619,479	383,686	61.94	309,900	50.03	218,134	35.21
Oromia	908,694	481,952	53.04	896,909	363,210	40.50	304,108	33.91	244,046	27.21
Somali	132,619	8,745	6.59	130,112	6,037	4.64	7,922	6.09	3,536	2.72
Ben-Gum.	20,399	9,017	44.20	20,936	5,897	28.17	5,770	27.56	3,951	18.87
SNNPR	516,544	384,035	74.35	516,909	282,428	54.64	243,216	47.05	165,682	32.05
Gambella	7,317	4,646	63.50	6,962	2,546	36.57	2,543	36.53	1,907	27.39
Hareri	5,765	4,774	82.81	5,587	4,175	74.72	3,519	62.98	2,829	50.63
Addis Ababa	62,654	44,197	70.54	56,847	41,469	72.95	37,134	65.32	36,473	64.16
Dire Dawa	12,228	8,644	70.69	11,814	7,851	66.45	6,917	58.55	3,601	30.48
National	2,477,274	1,505,642	60.78	2,448,922	1,234,329	50.40	1,050,923	42.91	787,319	32.66

Fig. 4 Immunization Coverage (DPT3) by Regions, 1995



5.2 DROP-OUT RATES OF ROUTINE EPI ACTIVITY, 1995

Regions	BCG-Measles	Rate	BCG-DPT3	Rate	DPT1-DPT3	Rate	DPT1-Measles	Rate
Tigray	21,080	14.82	12,715	8.94	6,199	4.57	14,564	12.02
Afar	1,830	17.34	3,059	28.98	3,802	33.65	2,573	29.49
Amhara	399,716	56.33	325,930	45.93	NA	NA	68,839	22.21
Oromia	177,844	36.90	118,742	24.64	114,092	23.90	173,194	56.95
Somali	823	9.41	2,708	30.97	4,609	43.29	2,724	34.39
Benishangul	3,247	36.01	3,120	34.60	3,706	38.59	3,833	66.43
SNNPR	140,819	36.67	101,607	26.46	99,729	26.10	138,941	57.13
Gambella	2,103	45.26	2,100	45.20	1,369	34.97	1,372	53.95
Hareri	1,255	26.29	599	12.55	835	16.67	1,491	42.37
Addis Ababa	7,063	15.98	2,728	6.17	2,265	5.18	6,600	17.77
Dire Dawa	1,727	19.98	793	9.17	605	7.15	1,539	22.25
National	757,507	41.89	574,101	31.75	237,211	16.17	415,670	39.55

5.3 TT2+ ACHIEVEMENT & COVERAGE BY REGION, 1995

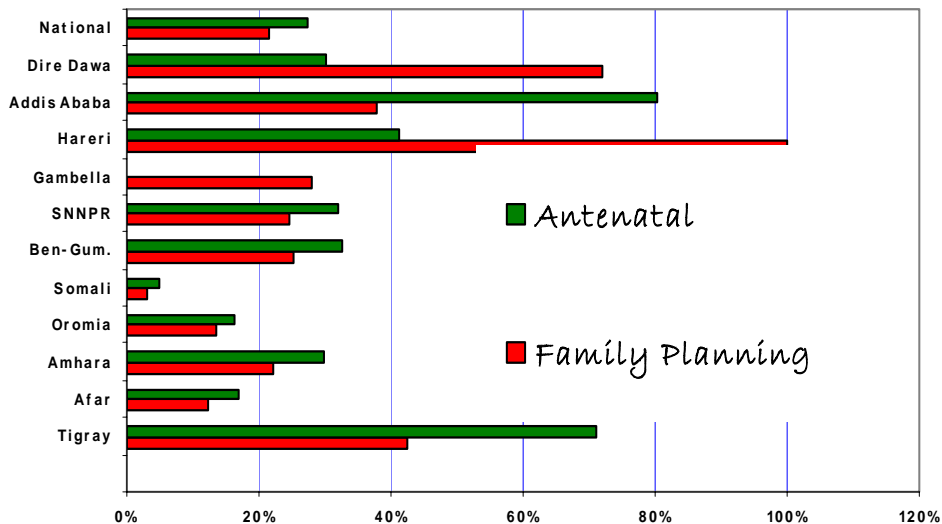
Region	TT2+ Achievement & Coverage					
	Pregnant Women			Non-Pregnant Women		
	Target Population	Achieved	Coverage	Target Population	Achieved	Coverage
Tigray	161,843	210,591	130.1	773,867	32,276	4.2
Afar	43,974	3,411	7.8	247,032	2,709	1.1
Amhara	697,926	143,746	20.6	3,426,390	447,955	13.1
Oromia	1,014,832	222,684	21.9	4,653,000	566,900	12.2
Somali	144,472	5,268	3.6	773,279	7,312	0.9
Ben-Gum.	23,200	4,508	19.4	116,800	9,768	8.4
SNNPR	583,024	136,104	23.3	2,671,949	316,717	11.9
Gambella	7,934	2,666	33.6	53,451	5,966	11.2
Hareri	6,337	2,804	44.2	41,216	5,370	13.0
Addis Ababa	61,858	36,099	58.4	872,897	35,419	4.1
Dire Dawa	13,209	4,331	32.8	84,684	5,114	6.0
National	2,758,608	772,212	28.0	13,714,566	1,435,506	10.5

5.4 MATERNAL HEALTH SERVICES ACHIEVEMENT & COVERAGE BY REGION, 1995

Region	Expected Delivery/ Pregnancy	Antenatal		Attended Delivery		Postnatal Services		Non-Pregnant Women	Family Planning		
		Achieved	Coverage	Achieved	Coverage	Achieved	Coverage		New Acceptors	Continual Acceptors	Coverage
Tigray	161,843	115,135	71.14	56,787	35.09	52,446	32.41	773,867	222,835	106,479	42.55
Afar	43,974	7,440	16.92	458	1.04	323	0.73	247,032	17,458	12,776	12.24
Amhara	697,926	208,019	29.81	49,563	7.10	51,092	7.32	3,426,390	759,279		22.16
Oromia	1,014,832	164,746	16.23	71,816	7.08	65,388	6.44	4,653,000	415,076	212,319	13.48
Somali	144,472	7,021	4.86	3,907	2.70	897	0.62	773,279	11,575	11,109	2.93
Benishangul	23,200	7,545	32.52	2,363	10.19	496	2.14	116,800	14,132	15,175	25.09
SNNPR	583,024	186,683	32.02	38,478	6.60	NA	NA	2,671,949	658,410		24.64
Gambella	7,934	NA	NA	882	11.12	829	10.45	53,451	4,771	10,241	28.09
Harari	6,337	2,618	41.31	1,154	18.21	391	6.17	41,216	57,552	22,269	*100.00
Addis Ababa	61,858	49,716	80.37	20,378	32.94	10,744	17.37	872,897	174,256	155,968	37.83
Dire Dawa	13,209	3,993	30.23	2,709	20.51	NA	NA	84,684	38,230	22,824	72.10
National	2,758,608	752,916	27.37	248,495	9.01	182,606	8.44	13,714,566	2,373,574	569,160	21.46

* According to the annual report of Hareri the estimated CPR coverage is above 100%.

Fig. 5 Family Planning & Antenatal Coverage



5.5 NUTRITIONAL STATUS OF CHILDREN & MOTHERS

Regions	%			Mothers BMI (kg/m ²) <18.5
	Stunted	Wasted	Under Weight	
Tigray	55.3	11.1	47.9	34.9
Afar	47.6	12.6	50.5	42
Amhara	57.0	9.5	51.8	31.4
Oromia	47.2	10.4	42.4	28.7
Somali	46.4	15.8	44.3	48.3
Ben - Gumuz	41.3	14.2	42.3	38.1
SNNPR	55.4	11.8	53.7	30.7
Gambella	37.0	18.1	39.0	38.7
Hareri	37.3	6.3	27.1	25.2
Addis Ababa	26.8	4.2	14.1	17.9
Dire Dawa	30.5	11.1	30.8	27.2
Urban	42.3	5.5	33.7	23.2
Rural	52.6	11.1	48.7	31.8
National	51.5	10.5	47.2	30.1

Source: Demographic & Health Survey, 2000

5.6 AMOUNT OF CONTRACEPTIVE DISTRIBUTED BY TYPE OF CONTRACEPTIVE METHOD, 1995

5.6.1 DISTRIBUTION OF CONTRACEPTIVES BY FMOH & NGOs, 1995

Contraceptives by Type	Unit	MOH	DKT	Pathfinder International	FGAE	Total
Microgynon	Cycle	-	-	-	218,080	218,080
Lo-Femenal/ Duofem	Cycle	88,800	1,558,705	20,400	194,310	1,862,215
Excluton	Cycle	165,200	-	-	13,857	179,057
Neogyon	Cycle	-	-	-	11,672	11,672
Nordette	Cycle	-	-	-	53,579	53,579
Depo Provera	Vial	61,731	298,061	240,000	240,972	840,764
Megestron	Vial	75,600	-	-	-	75,600
Male Condoms	Each	3,117,600	54,652,880	6,618,000	1,908,011	66,296,491
Female Condoms	Each	-	-	-	1,715	1,715
Conceptro Foaming	Each	1,152	-	201,600	7,116	209,868
Copper T	Each	3,800	-	30,000	2,183	35,983
Norplant	Each	1,170	-	-	1,823	2,993

5.6.2 DISTRIBUTION OF CONTRACEPTIVES BY FMOH TO THE REGIONS , 1995

Regions	Lo-Femenal (Cycle)	Excluton (Cycle)	Depo Provera (Vial)	Megestron (Vial)	Male Condoms (Each)	Conceptrol Foaming (Each)	Copper T (Each)	Norplant (Each)
Tigray	-	-	20,000	-	79,200	-	-	-
Afar	-	-	-	-	72,000	-	-	-
Amhara	-	-	-	-	799,200	-	-	-
Oromia	34,800	156,800	517	64,400	158,400	-	1,000	300
Somali	-	-	-	-	108,000	-	-	-
Benishangul	-	-	-	-	43,200	-	-	-
SNNPR	-	-	22,014	-	590,400	-	200	100
Gambella	-	-	-	-	43,200	-	-	-
Hareri	-	-	1,200	-	57,600	-	200	-
Dire Dawa	15,600	-	2,000	-	100,800	1,152	100	140
Addis Ababa	2,400	6,000	16,000	11,200	-	-	2,300	430
Others*	36,000	2,400	-	-	1,065,600	-	-	200
National	8,800	165,200	61,731	75,600	3,117,600	1,152	3,800	1,170

* Distributed to Ministry of Defense, Family Guidance Association of Ethiopia (FGAE) & Alage College

5.7 PERCENTAGE OF CONTRACEPTIVE USERS BY TYPE OF CONTRACEPTIVE METHOD, 1993 –1995

Region	Pills			Depo Provera			Norplant			IUD			Condoms			Others		
	1993	1994	1995	1993	1994	1995	1993	1994	1995	1993	1994	1995	1993	1994	1995	1993	1994	1995
Tigray	53.3	55.6	34.3	30.0	32.8	43.4	0.1	0.1	0.0	0.1	0.0	0.0	16.5	11.6	22.2	0.0	0.0	0.1
Afar	25.3	10.7	20.1	48.8	54.0	38.8	0.0	0.0	0.0	0.0	0.0	0.0	26.0	35.3	41.1	0.0	0.0	0.0
Amhara	NA	73.1	NA	NA	19.0	NA	NA	0.0	NA	0.0	NA	0.2	NA	6.6	NA	NA	1.1	NA
Oromia	62.3	58.2	4.6	26.2	30.6	4.4	0.1	0.1	0.0	0.2	0.1	0.0	11.2	11.0	1.6	0.1	0.0	0.0
Somali	28.3	87.2	69.9	11.4	5.6	16.0	0.0	0.0	0.0	0.0	0.0	0.0	60.3	7.2	14.0	0.0	0.0	0.0
B/Gum	44.3	33.5	30.5	41.9	58.5	65.0	0.0	0.0	0.0	0.0	0.0	0.0	13.8	8.0	4.5	0.0	0.0	0.0
SNNPR	0.0	53.5	51.3	0.0	39.4	33.9	0.0	0.1	0.1	0.0	0.3	0.3	0.0	6.7	13.3	0.0	0.1	1.1
Gambella	40.0	49.9	51.3	30.1	29.6	33.6	0.0	0.0	0.0	0.0	0.0	0.0	30.0	20.5	15.1	0.0	0.0	0.0
Hareri	35.0	31.8	18.5	30.3	20.3	20.4	7.1	0.1	0.1	0.1	0.2	24.5	27.6	47.7	36.4	0.0	0.0	0.0
Addis Ababa	56.7	43.6	41.1	34.6	42.5	43.8	0.2	0.4	0.6	0.4	1.4	0.7	7.3	11.6	13.7	0.9	0.6	0.1
Dire Dawa	NA	0.0	45.7	NA	0.0	31.0	NA	0.0	0.2	NA	0.0	0.2	NA	0.0	22.9	NA	0.0	0.0
National	30.8	58.5	31.0	17.0	29.6	33.0	0.3	0.1	0.2	0.1	0.2	1.9	7.5	10.6	16.2	0.2	0.4	0.1

6. HYGIENE & ENVIRONMENTAL HEALTH SERVICES

6.1 HYGIENE & ENVIRONMENTAL HEALTH PROFILE BY REGIONS, 1994

Region	Access to Safe Water						Access to Excreta Disposal					
	Urban		Rural		Total		Urban		Rural		Total	
	Achieved	%	Achieved	%	Achieved	%	Achieved	%	Achieved	%	Achieved	%
Tigray	518,320	76.0	64,380	2.0	582,700	14.9	409,200	60.0	386,280	12.0	795,480	20.4
Afar	47,166	44.1	166,595	14.3	213,761	16.8	62,381	58.3	58,250	5.0	120,631	9.5
Amhara	1,536,000	83.6	3,488,100	22.7	5,024,100	29.2	400,000	21.8	453,000	2.9	853,000	5.0
Oromia	1,901,310	65.2	4,570,247	22.0	6,471,557	27.3	1,171,187	40.1	780,751	3.8	1,951,937	8.2
Somali	235,515	38.4	264,205	8.0	499,720	12.8	295,626	48.1	223,603	6.8	519,229	13.3
Ben.-Gumuz	24,796	47.7	72,911	14.2	97,707	17.3	30,656	59.0	119,574	23.3	150,231	26.6
SNNP	701,601	66.4	2,621,949	21.4	3,323,550	25.0	402,137	38.0	537,285	4.4	939,422	7.1
Gambella	20,119	51.6	15,264	8.3	35,383	15.9	8,533	21.9	7,018	3.8	15,551	7.0
Hareri	62,599	59.6	22,044	32.9	84,642	49.2	50,721	48.3	11,730	17.5	62,451	36.3
Addis Ababa	2,603,664	98.4			2,603,664	98.4	2,116,800	80.0	-	-	2,116,800	80.0
Dire Dawa	150,892	60.6	34,389	37.0	185,281	54.2	177,520	71.3	955	1.0	178,475	52.2
National	7,801,981	75.7	11,320,084	19.9	19,122,065	28.4	5,124,762	49.7	2,224,356	3.9	7,703,208	11.5

Source: Survey conducted on Environmental Health Profile of Regions & Selected cities/Towns in Ethiopia, 1995

6.2 GLOBAL HYGIENE & ENVIRONMENTAL HEALTH SERVICE INDICATORS

	% of Population Using Improved Drinking Water Source, 1999*		% of Population Using Adequate Sanitation, 1999*	
	Total	Rural	Total	Rural
WORLD	81	71	57	36
AFRICA				
Egypt	95	94	94	91
Eritrea	46	42	13	1
Ethiopia	24	13	15	6
Ghana	64	49	63	64
Kenya	49	31	86	81
Morocco	82	58	75	42
Mozambique	60	43	43	26
Nigeria	57	39	63	45
Rwanda	41	40	8	8
South Africa	86	80	86	73
Sudan	75	69	62	48
Tanzania	54	42	90	86
Uganda	50	46	75	72
Zambia	64	48	78	64
Zimbabwe	85	77	68	51
NORTHERN AMERICA				
Canada	100	99	100	99
United State	100	100	100	100
LATIN AMERICA & THE CARIBBEAN	84	63	76	47
Argentina	79	30	85	48
ASIA				
China	75	66	38	24
India	88	86	31	14
Iran	95	89	81	74
Iraq	85	48	79	31
Jordan	96	84	99	98
Pakistan	88	84	61	42
Philippines	87	80	83	71
Saudi Arabia	95	64	100	100
Syria	80	64	90	81
Turkey	83	84	91	70
Vietnam	56	50	73	70
Yemen	69	64	45	31
EUROPE				
Netherlands	100	100	100	100
Norway	100	100		
Russia	99	96		
Switzerland	100	100	100	100
United Kingdom	100	100	100	100
OCEANIA				
Australia	100	100	100	100

Source: Health & Environmental Indicators (PRB), August 2002

* Years indicated in G.C.

7. HEALTH INFRASTRUCTURE

7.1 POTENTIAL HEALTH SERVICE COVERAGE, 1995

Region	Population	Facility Type				Potential Health Service Coverage (%)		
		Health Center (HC)	Health Station (HS)	Health Post (HP)	Private Clinics (PC)	HC, HS	HC, HS, HP	HC, HS, HP, PC
Tigray	4,006,008	35	183	121	28	67.52	82.63	86.12
Afar	1,301,001	8	45	56	2	49.96	71.48	72.25
Amhara	17,669,006	81	508	410	178	40.21	51.81	56.85
Oromia	24,395,000	141	903	326	482	51.47	58.15	68.03
Somali	4,002,000	20	114	54	2	40.98	47.73	47.98
Ben.-Gumuz	580,000	7	75	44	4	159.48	197.41	200.86
SNNPR	13,686,002	118	371	306	154	48.66	59.84	65.47
Gambella	228,002	8	18	42	7	166.67	258.77	274.12
Hareri	178,000	2	19	7	18	134.83	154.49	205.06
Addis Ababa	2,725,002	28	148	46	339	80.00	88.44	150.64
Dire Dawa	357,000	3	12	20	15	54.62	82.63	103.64
National	69,127,021	451	2,396	1,432	1,229	50.97	61.33	70.22

Note: Health Centers, Health Stations, Health Posts & Private Clinics are included in the calculation which consider to serve with the capacity of 25,000, 10,000 & 5,000 population each for Health Centers, Health Stations, Health Posts/ Private Clinics, respectively.

7.2 DISTRIBUTION OF HEALTH INFRASTRUCTURE, 1995

Region	Hospitals			Health Centers				Health Stations			Health Posts	
	MOH	Others [®]	Total	Beds	MOH	Others*	Total	Beds	MOH	Others*		Total
Tigray	12	2	14	1,127	34	1	35	195	166	17	183	121
Afar	2	0	2	120	8	0	8	70	45	0	45	56
Amhara	15	2	17	1,246	81	0	81	318	508	0	508	410
Oromia	21	8	29	2,280	135	6	141	0	762	141	903	326
Somali	6	0	6	436	14	6	20	200	110	4	114	54
Ben.-Gumuz	2	0	2	254	7	0	7	8	66	9	75	44
SNNPR	11	3	14	1,260	114	4	118	550	322	49	371	306
Gambella	1	0	1	93	4	4	8	0	12	6	18	42
Hareri	3	2	5	440	2	0	2	20	9	10	19	7
Addis Ababa	5	17	22	2,346	24	4	28	155	9	139	148	46
Dire Dawa	1	1	2	320	3	0	3	30	4	8	12	20
Central**	4	1	5	1,871	0	0	0	0	0	0	0	0
National	83	36	119	11,793	426	25	451	1228	2013	383	2396	1432

[®] Includes Private Hospitals

* Facilities owned by OGA & NGOs

** Includes 5 Central hospitals (St. Paulos, St. Peter, Amanuel, ALERT & Black Lion Hospitals)

7.3 DISTRIBUTION OF HOSPITALS BY TYPE AND OWNERSHIP, 1995

Region	MOH			OGA	NGO	Private	Total
	Specialized Hospital	Zonal Hospital	District Hospital				
Tigray	0	5	7	0	0	2	14
Afar	0	1	1	0	0	0	2
Amhara	0	6	9	2	0	0	17
Oromia	1	13	7	4	4	0	29
Somali	0	3	3	0	0	0	6
Benishangul	0	1	1	0	0	0	2
SNNPR	0	6	5	0	3	0	14
Gambella	0	0	1	0	0	0	1
Hareri	0	2	1	2	0	0	5
Addis Ababa	0	5	0	3	2	12	22
Dire Dawa	0	0	1	1	0	0	2
Central	4	0	0	1	0	0	5
National	5	42	36	13	9	14	119

7.4 DISTRIBUTION OF PRIVATE OWNED CLINICS BY TYPE AND REGION, 1995

Region	Types of Clinics				Total
	Lower	Medium	Higher	Special	
Tigray	26	1	1	0	28
Afar	2	0	0	0	2
Amhara	131	38	5	4	178
Oromia	NA	NA	NA	NA	482
Somali	0	0	2	0	2
Benishangul	3	1	0	0	4
SNNP	115	31	8	0	154
Gambella	6	1	0	0	7
Hareri	5	12	1	0	18
Addis Ababa	103	94	68	74	339
Dire Dawa	4	8	3	0	15
National	395	186	88	78	1229

7.5 DISTRIBUTION OF PHARMACEUTICAL RETAIL OUTLETS BY REGION & OWNERSHIP, 1995

Region	Pharmacies				Drug Shops				Rural Drug Vendors		
	Public	NGO	Private	Total	Public	NGO	Private	Total	NGO	Private	Total
Tigray	0	1	14	15	1	0	0	1	0	223	223
Afar	0	0	1	1	0	0	4	4	0	45	45
Amhara	5	3	23	31	4	2	43	49	0	230	230
Oromia	0	0	0	65	0	0	0	141	0	813	813
Somali	0	0	0	0	0	1	2	3	0	39	39
Benishangul	0	0	0	0	0	0	3	3	0	31	31
SNNPR	7	4	23	34	8	1	39	48	0	473	473
Gambella	1	0	0	1	0	0	2	2	0	15	15
Hareri	0	0	7	7	1	0	7	8	0	3	3
Addis Ababa*	10	0	128	138	1	0	38	39	0	8	8
Diredawa	2	0	8	10	1	0	0	1	0	8	8
National	25	8	204	302	16	4	138	299	0	1888	1888

* Data is taken from 1994 report

7.6 HEALTH FACILITY CONSTRUCTION, REHABILITATION & EXPANSION, 1995

Description	Activities						
	Newly Constructed	Ongoing Construction	Rehabilitated	Expanded	Upgraded	Equipped	Furnished
Specialized Hospital	0	0	1	0	0	0	0
Zonal Hospital	1	1	3	2	0	2	1
District Hospital	2	5	0	2	0	1	0
Health Centers	37	77	1	5	3	16	11
Health Stations	0	0	1	0	57	25	24
Health Post	109	196	1	1	0	38	27
Training School	1	2	1	4	1	1	1
Drug Store	2	4	0	0	0	1	1
Regional laboratory	1	1	0	0	0	1	0
Regional Health Bureaus	1	2	0	0	0	1	1
Zonal Health Departments	0	11	0	0	0	0	0
Wereda Health Office	0	0	0	1	0	0	0
Medical Equipment Workshop Construction	1	0	0	0	0	0	0
Regional Cold Chain Store	0	1	0	0	0	0	0

8. HUMAN RESOURCES

8.1 HEALTH HUMAN RESOURCE DISTRIBUTION BY REGION AND SEX, 1995

Profession	Tig	Afar	Amh	Orom	Som	Ben	SNNP	Gam	Har	A/A	DD	Cent	NGO	OGA	Private [@]	Total (%F)
Physicians	85	17	162	232	46	21	187	12	53	200	41	248	49	309	370	2032
Female	2	1	9	NA	0	0	15	0	6	56	4	46	1	NA	39	12.0%
Health Officers	55	8	129	169	9	19	123	6	3	7	6	4	2	71	20	631
Female	10	2	13	NA	2	3	13	1	2	2	2	1	0	NA	0	13.0%
Pharmacists	4	0	6	17	2	2	18	2	1	2	2	16	7	34	12	125
Female	2	0	1	NA	0	0	2	0	0	1	0	4	0	NA	3	17.6%
Nurses	1222	215	1593	2531	325	201	1661	158	201	825	137	606	433	4015	37	14160
Female	794	51	602	NA	77	42	469	44	84	573	80	376	306	NA	28	46.3%
Env. Health W.	93	13	283	283	51	25	192	4	7	2	19	23	4	55	0	1054
Female	22	0	20	NA	4	1	18	0	1	0	5	5	0	NA	0	10.6%
Lab. Tech.	159	20	268	375	46	27	309	10	32	121	17	45	42	444	230	2145
Female	58	1	32	NA	2	2	40	2	7	43	5	6	9	NA	42	18.8%
Radiographer	16	1	26	40	5	6	26	1	7	25	4	25	1	56	32	271
Female	1	0	2	NA	0	6	0	0	1	2	0	6	0	NA	4	12.6%
Pharm. Tech.	139	15	145	196	13	14	114	5	13	75	7	18	12	261	19	1046
Female	45	2	23	NA	2	0	16	0	4	40	0	6	2	NA	6	24.8%
Health Assistant	885	60	1220	2115	114	97	1126	39	62	383	67	284	103	301	0	6856
Female	416	22	388	NA	9	5	232	3	43	249	35	170	25	NA	0	36.0%
*FLHW	7070	162	837	161	248	88	469	39	43	91	12	0	360	4927	0	14507
Female	4348	39	393	NA	152	37	103	17	32	77	5	0	274	NA	0	58.1%
Total	9728	511	4669	6119	859	500	4225	276	422	1731	312	1269	1013	10473	720	42827
Female	5698	118	1483	NA	248	96	908	67	180	1043	136	620	617	NA	122	43.2%

* FLHW includes CHA, TBA, and PHW

@ Data is available only for Addis Ababa region. (Health Professionals working under private Health Facilities)

8.2 DISTRIBUTION OF PHYSICIANS BY SPECIALIZATION AND REGION, 1995

Region	Tig	Afar	Amh	Orom	Som	Ben	SNNP	Gam	Har	A/A	DD	Cent	NGO	OGA	Private*	Total
Total	85	17	162	232	46	21	187	12	53	20	41	248	49	309	370	2032
Specialists	31	0	24	47	19	2	21	0	13	73	14	164	15	154	175	752
Internists	3	0	0	2	1	0	1	0	2	7	1	34	0	26	20	97
Surgeons	4	0	4	10	2	2	5	0	3	13	3	21	1	29	20	117
Pediatricians	3	0	1	6	3	0	3	0	1	9	2	13	1	19	21	82
Gynaecologists	2	0	7	12	1	0	5	0	2	12	4	17	1	15	23	101
Ophthalmologists	2	0	3	3	2	0	2	0	1	7	1	7	4	7	15	54
Orthopedists	0	0	1	1	0	0	0	0	0	3	0	4	3	7	1	20
ENT Specialists	0	0	0	1	0	0	0	0	0	4	0	4	0	7	2	18
Anaesthesiologists	0	0	0	1	0	0	0	0	1	4	1	5	0	7	0	19
Dentists	0	0	1	0	1	0	0	0	0	1	0	1	0	4	53	61
Radiologists	2	0	2	1	1	0	1	0	1	4	1	8	0	8	9	38
Physiotherapists	1	0	0	0	0	0	0	0	0	0	0	8	1	2	0	12
Neurologists	0	0	0	0	0	0	0	0	0	1	0	2	1	2	1	7
Public Health	13	0	5	10	8	0	4	0	2	5	1	22	3	9	0	82
Dermatologists	0	0	0	0	0	0	0	0	0	0	0	6	0	4	7	17
Psychiatrists	0	0	0	0	0	0	0	0	0	0	0	7	0	3	1	11
Pathologists	1	0	0	0	0	0	0	0	0	3	0	5	0	5	2	16
General Practitioners	54	17	138	185	27	19	166	12	40	127	27	84	34	155	195	1280

* Data is available only for Addis Ababa region. (Health Professionals working under private Health Facilities)

8.3 DISTRIBUTION OF NURSES BY SPECIALTY, REGION AND SEX, 1995

Region	Nurse B. Sc.		Mid-Wife Nurse		Psychiatry Nurse		Anaesthist Nurse		MCH Nurse		Dental Nurse		Clinical Nurse		Public Health N.		Staff Nurse		Other Nurses*		Total	
	BS	F	BS	F	BS	F	BS	F	BS	F	BS	F	BS	F	BS	F	BS	F	BS	F	BS	F
	Tigray	5	2	188	173	4	1	6	0	1	0	2	2	1000	609	15	6	0	0	1	1	1222
Afar	0	0	29	11	0	0	1	0	0	0	0	0	178	39	6	1	0	0	1	0	215	51
Amhara	6	2	172	81	8	3	10	4	4	2	3	0	726	245	170	59	490	202	4	4	1593	602
Oromia	14	NA	228	NA	21	NA	22	NA	8	NA	8	NA	1925	NA	298	NA	0	0	7	NA	2531	NA
Somali	0	0	37	36	0	0	3	0	0	0	0	0	258	39	14	0	4	0	9	2	325	77
Ben.-Gumuz	0	0	26	13	2	0	3	1	0	0	2	0	133	24	30	4	0	0	5	0	201	42
SNNPR	2	0	228	107	10	2	14	2	4	1	4	0	1246	323	150	34	0	0	3	0	1661	469
Gambella	2	0	17	5	1	0	1	1	0	0	0	0	104	27	21	7	3	0	9	4	158	44
Hareri	3	0	22	15	2	1	3	1	2	1	1	0	126	50	19	5	7	3	16	8	201	84
Addis Ababa	6	3	83	69	0	0	0	0	0	0	2	0	174	96	27	13	437	325	96	67	825	573
Dire Dawa	2	1	6	5	2	1	3	1	7	6	1	1	19	12	0	0	91	49	6	4	137	80
Central	8	5	27	26	37	14	21	9	7	6	1	1	147	100	32	23	151	89	175	103	606	376
NGO	4	0	10	7	0	0	1	1	1	0	1	0	38	16	0	0	329	249	49	33	433	306
OGA	22	NA	44	NA	20	NA	101	NA	1	1	8	NA	3426	NA	16	NA	121	NA	256	NA	4015	NA
Private**	0	0	25	23	0	0	12	5	0	0	0	0	0	0	0	0	0	0	0	0	37	28
National (%F)	74	34.2	1142	65.6	107	33.3	201	32.1	35	65.4	33	23.5	9500	38.1	798	31.4	1633	60.6	637	60.4	14160	46.3

* Includes Tutor, Surgical, Ophthalmic, OR & Pediatric Nurses

** Data is available only for Addis Ababa region. (Health Professionals working under private Health Facilities)

8.4 HEALTH PROFESSIONALS POPULATION RATIO BY REGION, 1995

Region	Population	Physician*		Nurse		Health Assistant		Nurses & Health Assistants		Environmental Health Worker	
		No.	Ratio	No.	Ratio	No.	Ratio	No.	Ratio	No.	Ratio
Tigray	4,006,008	140	28,614	1,222	3,278	885	4,527	2,107	1,901	93	43,075
Afar	1,301,001	25	52,040	215	6,051	60	21,683	275	4,731	13	100,077
Amhara	17,669,006	291	60,718	1,593	11,092	1,220	14,483	2,813	6,281	283	62,435
Oromia	24,395,000	401	60,835	2,531	9,638	2,115	11,534	4,646	5,251	283	86,201
Somali	4,002,000	55	72,764	325	12,314	114	35,105	439	9,116	51	78,471
Benshangul	580,000	40	14,500	201	2,886	97	5,979	298	1,946	25	23,200
SNNPR	13,686,002	310	44,148	1,661	8,240	1,126	12,155	2,787	4,911	192	71,281
Gambella	228,002	18	12,667	158	1,443	39	5,846	197	1,157	4	57,001
Hareri	178,000	56	3,179	201	886	62	2,871	263	677	7	25,429
Addis Ababa	2,725,002	207	13,164	825	3,303	383	7,115	1,208	2,256	2	1,362,501
Dire Dawa	357,000	47	7,596	137	2,606	67	5,328	204	1,750	19	18,789
Central	-	252	-	606	-	284	-	890	-	23	-
NGO	-	51	-	433	-	103	-	536	-	4	-
OGA	-	380	-	4,015	-	301	-	4,316	-	55	-
Private	-	390	-	37	-	-	-	37	-	-	-
National	69,127,021	2,663	25,958	14,160	4,882	6,856	10,083	21,016	3,289	1,054	65,585
WHO Standard			1:10,000		1:5,000				1:5,000		

* The number of physicians include 631 health officers

9. BUDGET ALLOCATION & EXPENDITURE

9.1 RECURRENT HEALTH BUDGET ALLOCATION & EXPENDITURE BY REGION, 1995

Region	*Budget	**Expenditure	% Expenditure
Tigray	68,800,000	68,300,000	99.3
Afar	42,900,000	8,900,000	20.7
Amhara	178,900,000	91,600,000	51.2
Oromia	429,700,000	113,700,000	26.5
Somali	16,600,000	18,800,000	113.3
Ben-Gum	16,100,000	12,800,000	79.5
SNNPR	100,700,000	37,600,000	37.3
Gambella	13,200,000	10,400,000	78.8
Hareri	12,100,000	10,100,000	83.5
Addis Ababa	55,700,000	75,500,000	135.5
Dire Dawa	10,800,000	9,600,000	88.9
Federal MOH	***74,600,000	69,300,000	92.9
National	1,020,100,000	526,600,000	51.6

9.2 CAPITAL HEALTH BUDGET ALLOCATION & EXPENDITURE BY REGION, 1995

Region	*Budget	**Expenditure	% Expenditure
Tigray	26,800,000	6,600,000	24.6
Afar	17,200,000	7,300,000	42.4
Amhara	84,800,000	1,900,000	2.2
Oromia	113,100,000	29,600,000	26.2
Somali	36,500,000	8,700,000	23.8
Ben-Gum	11,000,000	3,300,000	30.0
SNNPR	85,300,000	16,500,000	19.3
Gambella	7,100,000	3,200,000	45.1
Hareri	3,400,000	1,300,000	38.2
A/Ababa	94,100,000	3,000,000	3.2
Dire Dawa	8,100,000	2,200,000	27.2
Federal MOH	***30,500,000	214,200,000	702.3
National	517,900,000	297,800,000	57.5

* Original budgets

** The figures are preliminary (pre actual) report.

*** Include Supplemental Budget

Source: Ministry of Finance & Economic Development

9.3 HEALTH EXPENDITURE PER CAPITA BY REGION, 1995

Region	Population 1995	Budget Allocation	Total Expenditure	Per Capita
Tigray	4,006,008	95,600,000	74,900,000	18.7
Afar	1,301,001	60,100,000	16,200,000	12.5
Amhara	17,669,006	263,700,000	93,500,000	5.3
Oromia	24,395,000	542,800,000	143,300,000	5.9
Somali	4,002,000	53,100,000	27,500,000	6.9
Ben-Gum	580,000	27,100,000	16,100,000	27.8
SNNPR	13,686,002	186,000,000	54,100,000	4.0
Gambella	228,002	20,300,000	13,600,000	59.6
Hareri	178,000	15,500,000	11,400,000	64.0
Addis Ababa	2,725,002	149,800,000	78,500,000	28.8
Dire Dawa	357,000	18,900,000	11,800,000	33.1
Federal MOH		105,100,000	283,500,000	-
National	69,127,021	1,538,000,000	824,400,000	11.9

9.4 NATIONAL HEALTH RECURRENT BUDGET ALLOCATION & EXPENDITURE, 1980-1995

Year	Recurrent			
	Allocation	Expenditure	% Expenditure	% National
1980	133,157,111	117,645,563	88.4	3.5
1981	103,560,009	73,967,816	71.4	2.4
1982	75,507,467	56,890,315	75.3	1.5
1983	159,062,394	128,398,802	80.7	3.4
1984	160,799,956	151,508,560	94.2	4.1
1985	196,655,412	189,093,097	96.2	6.2
1986	300,921,100	257,700,000	85.7	6.5
1987	337,850,000	310,210,000	91.8	5.7
1988	357,040,000	328,060,000	91.9	6.1
1989	362,590,000	333,340,000	91.9	6.0
1990	379,800,000	394,264,000	103.8	5.5
1991	478,870,000	455,807,000	95.2	5.6
1992	406,799,000	398,412,486	98.0	3.5
1993	466,110,000	444,380,000	95.3	4.0
1994	549,608,500	522,000,000	95.0	4.3
1995	1,020,100,000	526,600,000	51.6	7.4

Source: Ministry of Finance & Economic Development

9.5 NATIONAL HEALTH CAPITAL BUDGET ALLOCATION & EXPENDITURE, 1980-1995

Year	Capital			
	Allocation	Expenditure	% Expenditure	% National
1980	54,511,358	37,035,181	67.94	2.42
1981	65,989,537	43,712,369	66.24	2.13
1982	63,657,463	41,816,479	65.69	2.31
1983	48,914,848	32,083,363	65.59	2.18
1984	63,014,122	37,390,162	59.34	3.60
1985	68,185,200	66,800,000	97.97	4.59
1986	211,012,822	68,548,811	32.49	5.51
1987	224,690,000	119,960,000	53.39	4.50
1988	262,300,000	153,890,000	58.67	5.02
1989	307,098,736	216,420,000	70.47	5.93
1990	354,200,000	276,910,000	78.18	6.59
1991	303,100,000	648,390,000	213.92	4.91
1992	360,537,000	176,700,000	49.01	4.75
1993	756,220,000	305,350,000	40.4	13.6
1994	503,565,585	235,100,000	46.7	8.44
1995	517,900,000	297,800,000	57.5	7.15

9.6 NATIONAL GOVERNMENT HEALTH EXPENDITURE PER CAPITA (ETH), 1980-1995

Years	Population	Budget Allocation	Total Expenditure	Per Capita
1980	44,978,892	187,668,469	154,680,744	3.4
1981	46,148,343	169,549,546	117,680,185	2.6
1982	47,348,200	139,164,930	98,706,794	2.1
1983	48,579,254	207,977,242	160,482,165	3.3
1984	49,842,314	223,814,078	188,898,722	3.8
1985	52,467,808	264,840,612	255,893,097	4.9
1986	53,477,265	511,933,922	326,248,811	6.1
1987	54,649,000	562,540,000	430,170,000	7.9
1988	56,372,000	619,340,000	481,950,000	8.5
1989	58,117,000	669,688,736	549,760,000	9.5
1990	59,882,000	734,000,000	671,174,000	11.2
1991	61,672,000	781,970,000	1,104,197,000	17.9
1992	63,495,000	767,336,000	575,112,486	9.1
1993	65,344,000	1,222,330,000	749,730,000	11.5
1994	67,220,000	1,053,174,085	757,100,000	11.3
1995	69,127,021	1,538,000,000	824,400,000	11.9

Source: Ministry of Finance & Economic Development

10. DISEASE STATISTICS

10.1 OUTPATIENT VISIT PER CAPITA

Region	Population	Out Patient			Total Admission	% Admission of New OPD Visit
		New Visit	Repeat Visit	Visit per Capita		
Tigray	4,006,008	1,482,090	1,493,028	26,254	1.77	
Afar	1,301,001	478,884	152,206	1,799	0.38	
Amhara	17,669,006	2,879,532	1,415,123	NA	NA	
Oromia	24,395,000	3,811,125	2,606,819	NA	NA	
Somali	4,002,000	270,511	91,863	8,818	3.26	
Ben.-Gumuz	580,000	241,687	66,066	3,937	1.63	
SNNPR	13,686,002	1,444,705	697,136	60,988	4.22	
Gambella	228,002	13,670	9,043	1,290	9.44	
Hareri	178,000	115,271	33,757	10,104	8.77	
Addis Ababa	2,725,002	678,548	510,872	19,669	2.90	
Dire Dawa	357,000	60,574	55,956	7,329	12.10	
Central		190,957	79,620	140,188	73.41	
National	69,127,021	11,667,554	7,211,489	280,376	5.63	

10.2 NUMBER OF INPATIENTS, DAYS, DEATHS AND BEDS, 1995

Regions	Hospitals & Health Centers									
	Total Discharged		Discharged Dead		No. of Beds	Total Length of Stay in Days	Ave. Length of Stay	Bed Occupancy Rate		
	Both Sexes	Female	Both Sexes	Female						
	Both Sexes	Female	Both Sexes	Female	No. of Beds	Total Length of Stay in Days	Ave. Length of Stay	Bed Occupancy Rate		
Tigray	26,254	13,852	1,643	709	1,322	153,515	5.8	38.7		
Afar	1,799	860	119	57	190	NA	NA	NA		
Amhara	NA	NA	NA	NA	1,564	NA	NA	NA		
Oromia	NA	NA	NA	NA	2,280	NA	NA	NA		
Somali	8,818	4,406	241	100	636	14,786	1.7	7.7		
Benishangul	3,937	1,908	114	49	262	14,472	3.7	18.4		
SNNPR	60,988	29,897	2,647	1,131	1,810	145,255	2.4	26.8		
Gambella	1,290	660	144	80	93	NA	NA	NA		
Hareri	10,104	5,858	717	304	460	66,821	6.6	48.4		
Addis Ababa	19,669	NA	914	NA	2,501	NA	NA	NA		
Dire Dawa	7,329	4,729	361	169	350	NA	NA	NA		
Central	140,188	62,170	6,900	2,599	1,871	394,849	2.8	70.3		
National	280,376	124,340	13,800	5,198	13,339	789,698	3.2	41.4		

10.3 DIAGNOSTIC SERVICES, 1995

Regions	New OPD Visit	% Diagnostic Services to New OPD Visit					
		Blood	Urine	Stool	Sputum	X-ray	Sonography
Tigray	1,482,090	3.65	13.44	12.05	0.11	1.33	-
Afar	478,884	3.49	0.82	1.90	-	0.04	-
Amhara	2,879,532	9.85	2.30	-	5.57	1.22	-
Oromia	3,811,125	-	-	-	-	2.12	-
Somali	270,511	6.24	1.76	2.14	1.49	0.58	-
Benishangul	241,687	8.82	2.08	9.68	0.67	-	-
SNNPR	1,444,705	20.04	5.42	12.63	-	1.19	0.27
Gambella	13,670	20.45	4.80	10.37	2.01	1.20	-
Hareri	115,271	40.98	29.15	16.99	13.01	10.18	-
Diredawa	60,574	33.78	9.38	8.86	3.38	3.88	-
Addis Ababa	678,548	69.34	14.02	3.16	1.49	4.04	1.87
Central	190,957	1.04	1.75	0.57	5.65	7.00	-
National	11,667,554	15.59	6.31	5.71	2.62	1.80	0.21

10.4 MAJOR & MINOR SURGERY PERFORMED BY REGIONS, 1995

Regions	Hospital		Health Center		Total	
	Major	Minor	Major	Minor	Major	Minor
Tigray	5,226	111,296		54	5,226	111,350
Afar	46	152		140	46	292
Amhara	7,578	31,727		-	7,578	31,727
Oromia	NA	NA		NA	NA	NA
Somali	262	229		-	262	229
Benishangul	130	331		-	130	331
SNNPR	5,071	7,960	508	1,259	5,579	9,219
Gambella	NA	NA		NA	NA	NA
Hareri	1,367	654		-	1,367	654
Diredawa	1,210	1,458		-	1,210	1,458
Addis Ababa	9,812	11,420		-	9,812	11,420
Central	2,458	1,819			2,458	1,819
Total	33,160	167,046	508	1,453	33,668	168,499

10.5 TOP 10 LEADING CAUSES , 1995

10.5.1 TOP 10 LEADING CAUSE OF OUTPATIENT VISIT

Top 10 leading Causes of Outpatient Visits for infant, 1995

Rank	Diagnosis	Cases	%
1	All types of Malaria	34,525	10.8
2	Acute upper respiratory infections	29,806	9.3
3	Gastro-enteritis and colitis (age 4 weeks to 2 years)	25,985	8.1
4	Dysentery	24,107	7.5
5	Bronchopneumonia	23,209	7.3
6	Influenza	18,713	5.8
7	Primary atypical, other, and unspecified pneumonia	15,395	4.8
8	Helminths	14,570	4.6
9	Hypertrophy of tonsils and adenoids	13,219	4.1
10	Infections of skin and subcutaneous tissue	10,178	3.2
Total of 10 leading causes		209,707	65.5
Total of all diseases		319,992	100.0

Top 10 leading Causes of Outpatient Visits for Female , 1995

Rank	Diagnosis	Cases	%
1	All types of Malaria	243,491	14.6
2	Helminths	117,722	7.1
3	Acute upper respiratory infections	92,772	5.6
4	Dysentery	76,519	4.6
5	Gastritis and duodenitis	73,764	4.4
6	Bronchopneumonia	56,477	3.4
7	All other diseases of Genito-Urinary system	53,095	3.2
8	Infections of skin and subcutaneous tissue	49,766	3.0
9	All other infective and parasitic diseases	36,424	2.2
10	Hypertrophy of tonsils and adenoids	34,860	2.1
Total of 10 leading causes		834,890	50.1
Total of all diseases		1,666,186	100.0

Top 10 leading Causes of Outpatient Visits, 1995

Rank	Diagnosis	Cases	%
1	All types of Malaria	549,632	15.5
2	Helminths	253,928	7.2
3	Acute upper respiratory infections	200,178	5.7
4	Dysentery	170,403	4.8
5	Gastritis and duodenitis	132,638	3.7
6	Bronchopneumonia	124,336	3.5
7	Infections of skin and subcutaneous tissue	117,588	3.3
8	All other infective and parasitic diseases	82,579	2.3
9	All other diseases of Genito-Urinary system	81,648	2.3
10	Primary atypical, other, and unspecified pneumonia	74,742	2.1
Total of 10 leading causes		1,787,672	50.5
Total of all diseases		3,542,231	100.0

* Data is not available from Amhara, Oromia, Somali

10.5.2 TOP 10 LEADING CAUSE OF ADMISSION

Top 10 leading Causes of Admission for Infant, 1995

Rank	Diagnosis	Cases	%
1	All types of Malaria	2,256	18.1
2	Bronchopneumonia	2,120	17.0
3	Gastro-enteritis and colitis (age 4 weeks to 2 years)	1,531	12.3
4	Observation without need for further medical care	951	7.6
5	Primary atypical, other, and unspecified pneumonia	915	7.4
6	Dysentery	780	6.3
7	Lobar pneumonia	339	2.7
8	All types of TB	289	2.3
9	Acute upper respiratory infections	243	2.0
10	All other infective and parasitic diseases	172	1.4
Total of 10 leading causes		9,596	77.2
Total of all diseases		12,436	100.0

Top 10 leading Causes of Admission for Female, 1995

Rank	Diagnosis	Cases	%
1	Deliveries without mention of complication	14,695	21.3
2	All types of Malaria	14,169	20.5
3	Other complication of pregnancy, childbirth and puerperium	3,059	4.4
4	Abortion without mention of sepsis or toxemia	2,690	3.9
5	Bronchopneumonia	2,557	3.7
6	All types of TB	2,404	3.5
7	Dysentery	1,870	2.7
8	Relapsing Fever	1,536	2.2
9	Helminths	1,438	2.1
10	Primary atypical, other, and unspecified pneumonia	1,325	1.9
Total of 10 leading causes		45,743	66.2
Total of all diseases		69,102	100.0

Top 10 leading Causes of Admission, 1995

Rank	Diagnosis	Cases	%
1	All types of Malaria	31,470	20.4
2	Deliveries without mention of complication	14,695	9.5
3	Bronchopneumonia	6,767	4.4
4	All types of TB	6,608	4.3
5	Dysentery	4,348	2.8
6	Other complication of pregnancy, childbirth and (puerperium)	4,049	2.6
7	Relapsing Fever	3,777	2.5
8	Abortion without mention of sepsis or toxemia	3,653	2.4
9	Primary atypical, other, and unspecified pneumonia	3,322	2.2
10	Helminths	3,085	2.0
Total of 10 leading causes		81,774	53.1
Total of all diseases		154,032	100.0

* Data is not available from Amhara, Oromia, Somali

10.5.3 TOP 10 LEADING CAUSE OF DEATHS

Top 10 leading Causes Death for Infants, 1995

Rank	Diagnosis	Cases	%
1	All types of Malaria	106	21.1
2	Bronchopneumonia	95	18.9
3	Primary atypical, other, and unspecified pneumonia	77	15.3
4	Lobar pneumonia	28	5.6
5	Gastro-enteritis and colitis (age 4 weeks to w years)	24	4.8
6	Tetanus	17	3.4
7	Dysentery	13	2.6
8	Septicaemia and pyaemia	12	2.4
9	Other meningitis (Except Meningococcal)	11	2.2
10	Observation without need for further medical care	11	2.2
Total of 10 leading causes		394	78.3
Total of all diseases		503	100.0

Top 10 leading Causes of Death for Female , 1995

Rank	Diagnosis	Cases	%
1	All types of Malaria	524	26.7
2	All types of TB	231	11.8
3	Bronchopneumonia	98	5.0
4	Primary atypical, other, and unspecified pneumonia	92	4.7
5	Relapsing Fever	45	2.3
6	Other complication of pregnancy, childbirth and puerperium	42	2.1
7	Dysentery	38	1.9
8	Hypertension without mention of heart	38	1.9
9	Lobar pneumonia	36	1.8
10	Typhoid Fever	33	1.7
Total of 10 leading causes		1,177	60.0
Total of all diseases		1,961	100.0

Top 10 leading Causes of Death, 1995

Rank	Diagnosis	Cases*	%
1	All types of Malaria	1,204	27.0
2	All types of TB	511	11.5
3	Bronchopneumonia	278	6.2
4	Primary atypical, other, and unspecified pneumonia	194	4.4
5	Tetanus	101	2.3
6	Relapsing Fever	42	0.9
7	Lobar pneumonia	89	2.0
8	Dysentery	82	1.8
9	Hypertension without mention of heart	90	2.0
10	Pyrexia of unknown origin (Fever)	68	1.5
Total of 10 leading causes		2,659	59.6
Total of all diseases		4,459	100.0

Data is not available from Amhara, Oromia, Somali, Addis Ababa

* Includes data from Addis Ababa Region

10.6 MALARIA CASES BY PARASITE SPECIES

Year	Region	Exam	Positive	P.f.	P.v.	P.m.	Mixed
1990	Tigray	166,510	68,363	50,002	18,297	0	0
	Afar	47,410	22,414	13,483	8,931	0	0
	Amhara	244,635	117,535	71,769	45,637	64	65
	Oromia	526,897	238,503	155,591	78,813	21	145
	Somali	11,769	5,947	5,478	469	0	0
	Ben-Gum	19,521	4,548	3,276	1,274	0	0
	SNNPR	258,848	136,608	74,884	61,638	0	0
	Gambella	30,269	11,042	10,081	760	193	8
	Total	1,305,859	604,960	384,564	215,819	278	218
		%	46.3	63.6	35.7	0.1	0.1
1991	Tigray	125,517	55,323	35,201	20,115	7	91
	Afar	55,276	26,264	15,345	10,419	0	0
	Amhara	286,185	147,773	92,575	55,231	103	95
	Oromia	598,162	269,897	162,702	104,331	23	109
	Somali	21,305	10,500	9,180	1,317	0	3
	Ben-Gum	34,498	12,765	7,296	5,467	2	0
	SNNPR	224,779	113,897	53,611	59,089	112	1,085
	Gambella	23,145	9,269	8,268	918	27	0
	Hareri	9,597	2,231	2,026	203	0	2
	Total	1,378,464	647,919	386,204	257,090	274	1,385
	%	47.0	59.6	39.7	0.1	0.2	
1992	Tigray	219,972	30,376	22,237	17,673		77
	Afar	NA	NA	NA	NA	NA	NA
	Amhara	458,474	89,077	50,228	4,059	NA	NA
	Oromia	467,907	136,873	68,269	66,306	44	24
	Somali	26,660	NA	NA	NA	NA	NA
	Ben-Gum	11025	5857	3,903	1,856	1	
	SNNPR	332,738	61,079	28,876	31,103	78	577
	Gambella	NA	7,271	NA	NA	NA	NA
	Hareri	NA	2,274	1895	379	NA	NA
	Dire Dawa	NA	2,290	1523	767	NA	NA
	Total	1,516,776	335,097	176,931	122,143	123	678
	%	22.1	52.8	36.5	0.0	0.2	

Year	Region	Exam	Positive*	P.f.	P.v.	P.m.	Mixed
1993	Tigray	72,725	17,527	8,428	9,099	-	-
	Afar	91,724	47,474	33,247	14,227	-	-
	Amhara	410,859	88,817	49,209	39,294	107	207
	Oromia	354,942	140,158	75,683	64,318	107	50
	Somali	16,754	3,433	3,309	124	-	-
	Ben-Gumuz	17,127	4,157	2,431	1,723	3	-
	SNNPR	172,426	82,486	55,310	26,780	133	263
	Gambella	20,771	10,305	9,031	1,254	20	-
	Hareri	7,947	2,675	2,277	398	-	-
	Addis Ababa	NA	NA	NA	NA	NA	NA
	Dire Dawa	4,452	3,339	1,627	1,712	-	-
	Total	1,169,727	400,371	240,552	158,929	370	520
	%	34.2	60.1	39.7	0.1	0.1	
1994	Tigray	89,862	23,348	14,857	8,462	4	72
	Afar	82,760	49,865	27,546	22,319	-	-
	Amhara	202,411	64,929	44,250	20,978	9	263
	Oromia	390,804	164,208	73,044	63,042	31	260
	Somali	27,038	14,498	13,659	838	-	1
	Ben-Gumuz	16,397	4,769	256	4,513	-	-
	SNNPR	191,003	88,521	51,321	35,349	104	1,744
	Gambella	23,608	7,598	6,585	966	45	2
	Hareri	22,174	6,062	5,614	368	-	-
	Addis Ababa	NA	937	NA	NA	NA	NA
	Dire Dawa	16,387	3,096	1,818	1,278	-	-
	Total	1,062,444	427,831	238,950	158,113	193	2,342
	%	40.27	55.85	36.96	0.05	0.55	
1995	Tigray	103,773	31,855	21,485	9,794		586
	Afar	93,600	51,575	33,235	18,340		
	Amhara*		109,224				
	Oromiya	308,702	156,274	76,553	57,616	73	182
	Somali	20,015	10,041	9,871	165		5
	Benishangul		10,064	4,804	5,229	2	30
	SNNPR	173,128	78,923	43,391	35,491	41	28
	Gambella	23,608	7,598	6,585	960	45	2
	Hareri	33,230	9,764	8,543	1,045		176
	Dire Dawa*		6,526				
	Addis Ababa*		1,779				
	Total	756,056	473,623	204,467	128,640	161	1,009
	%	62.64	43.17	27.16	0.03	0.21	

* Incomplete data

10.7 TUBERCULOSIS AND LEPROSY

10.7.1 TUBERCULOSIS CASE FINDINGS, 1995

Regions	Pulmonary Smear Positive				Pulmonary Smear Negative		Extra-Pulmonary		All New Cases		Total Notified Cases
	New	Relapse	Fail	Defaulter	Cases	%	Cases	%	Cases	%	
Tigray	1,554	96	10	15	2,328	34.37	2,770	40.90	6,652	98.21	6,773
Afar	266	69	23	14	761	48.69	430	27.51	1,457	93.22	1,563
Amhara	6,650	346	51	61	7,778	32.01	9,410	38.73	23,838	98.11	24,296
Oromia	12,796	370	65	137	11,260	28.62	14,712	37.40	38,768	98.55	39,340
Somali	1,370	106	18	18	601	21.93	627	22.88	2,598	94.82	2,740
Benishangul	193	2	0	2	173	22.24	408	52.44	774	99.49	778
SNNPR	9,457	227	30	80	4,265	22.08	5,260	27.23	18,982	98.26	19,319
Gambella	294	28	0	45	371	37.55	250	25.30	915	92.61	988
Hareri	205	3	2	1	219	34.43	206	32.39	630	99.06	636
Addis Ababa	3,879	394	27	40	4,378	33.64	4,297	33.02	12,554	96.46	13,015
Dire Dawa	710	77	4	11	763	33.60	706	31.09	2,179	95.95	2,271
Total	37,374	1,718	230	424	32,897	29.45	39,076	34.98	109,347	97.88	111,719

Remark: Data includes only from DOTS implementing zones

10.7.2 TUBERCULOSIS RESULTS OF TREATMENT, 1995

Patients on Short Course Chemotherapy

Regions	Total	Cured	Completed	Success Rate	% Died	% Fail	% Default	% Transferred
Tigray	1,325	847	220	80.53	7.77	0.75	6.11	4.83
Amhara	5,323	3,616	645	80.05	8.66	0.56	5.02	3.53
Oromiya	10,080	6,855	1,566	83.54	6.86	0.60	6.86	2.15
Somali	956	759	17	81.17	6.28	1.67	6.07	4.81
SNNPR	6,222	3,710	1,408	82.26	5.48	0.74	6.01	5.51
Hareri	195	150	1	77.44	8.21	0.51	7.69	6.15
A/Ababa	2,714	1,960	196	79.44	10.54	1.47	4.79	3.76
D/Dawa	633	284	251	84.52	5.37	1.42	3.48	5.21
Total	27448	18181	4304	81.92	7.26	0.77	5.97	3.66
Standard				≥ 85			<10	

10.7.3 CASE DETECTION RATE OF PTB+ BY REGIONS, 1995

Region	Estimated Incidence	Detected New Cases	Case Detection Rate
Tigray	4,927	1,544	31.3
Afar	1,600	266	16.6
Amhara	21,733	6,650	30.6
Oromiya	30,006	12,796	42.6
Somali	4,922	1,370	27.8
Benshangul	713	193	27.1
SNNPR	16,834	9,159	54.4
Gambella	280	232	82.9
Hareri	219	205	93.6
Addis Ababa	3,352	3,879	115.7
Dire Dawa	439	710	161.7
National	85,025	37,004	43.5
Standard			≥70

10.7.4 NUMBER OF HEALTH FACILITIES PROVIDING DOTS & MDT

Regions	DOTS & MDT						DOTS only						MDT only					
	Hosp	HC	HS	HP	Total	% per Facility	Hosp	HC	HS	HP	Total	% per Facility	Hosp	HC	HS	HP	Total	% per Facility
Tigray	0	27	118	0	145	41.1	12	0	0	0	12	3.4	0	0	0	0	0	0.0
Afar	2	4	16	0	22	19.8	0	0	0	0	0	0.0	0	0	0	0	0	0.0
Amhara	15	78	54	0	147	14.5	0	0	42	0	42	4.1	0	0	238	0	238	0.2
Oromiya	20	92	518	0	630	45.0	3	0	42	0	45	3.2	0	0	0	0	0	0.0
Somali	1	2	2	0	5	2.6	3	4	5	0	12	6.2	0	0	3	0	3	0.0
B/Gumuz	2	8	7	0	17	13.3	0	0	1	0	1	0.8	0	0	3	0	3	0.0
SNNPR	13	100	123	0	236	29.2	0	0	0	0	0	0.0	0	1	82	0	83	0.1
Gambella	1	5	54	0	60	87.0	0	0	0	0	0	0.0	0	0	10	0	10	0.1
Hareri	5	0	3	0	8	24.2	0	0	0	0	0	0.0	0	2	13	0	15	0.5
A/ Ababa	0	20	5	0	25	10.0	4	2	0	0	6	2.4	0	0	0	0	0	0.0
Dire Dawa	1	3	0	0	4	10.8	0	0	1	0	1	2.7	0	0	6	2	8	0.2
National	60	339	900	0	1299	29.5	22	6	91	0	119	2.7	0	3	355	2	360	0.1

10.7.5 LEPROSY CASE FINDINGS, 1995

Regions	Total Cases			New Cases			Relapses			Defaulter			Others		
	All	PB %	MB %	All	PB %	MB %	All	PB %	MB %	All	PB %	MB %	All	PB %	MB %
Tigray	196	7.7	92.3	179	7.8	92.2	13	0.0	100.0	3	33.3	66.7	1	0.0	100.0
Afar	28	32.1	67.9	20	40.0	60.0	2	0.0	100.0	6	16.7	83.3	0	-	-
Amhara	1724	15.7	84.3	1523	16.4	83.6	48	6.3	93.8	70	8.6	91.4	83	14.5	85.5
Oromiya	2653	8.6	91.4	2399	9.1	90.9	109	2.8	97.2	70	0.0	100.0	75	9.3	90.7
Somali	34	0.0	100.0	31	0.0	100.0	0	-	-	0	-	-	3	0.0	100.0
SNNPR	61	6.6	93.4	58	6.9	93.1	0	-	-	3	0.0	100.0	0	-	-
Benshangul	609	9.4	90.6	552	9.8	90.2	24	8.3	91.7	33	3.0	97.0	0	-	-
Gambella	367	22.9	77.1	259	23.2	76.8	6	16.7	83.3	96	22.9	77.1	6	16.7	83.3
Harrari	30	3.3	96.7	29	3.4	96.6	1	0.0	100.0	0	-	-	0	-	-
Addis Ababa	123	8.1	91.9	116	8.6	91.4	5	0.0	100.0	2	0.0	100.0	0	-	-
Dire Dawa	27	3.7	96.3	27	3.7	96.3	0	-	-	0	-	-	0	-	-
Total	5852	11.6	88.4	5193	12.0	88.0	208	4.3	95.7	283	11.0	89.0	168	11.9	88.1

10.8 NATIONAL SURVEILLANCE SYSTEM & EPIDEMIC REPORT, 1995

10.8.1 ANNUAL REPORT OF EPIDEMIC DISEASE, 1995

Regions	Tigray		Afar		Amhara		Oromia		Somali		Benishangul		SNNP		Gambella		Dire Dawa		Hareri		National	
	Cases	D	Cases	D	Cases	D	Cases	D	Cases	D	Cases	D	Cases	D	Cases	D	Cases	D	Cases	D	Cases	D
Meningitis	237	33	32	7	1246	53	60	9	0	0	35	7	504	65	0	56	5	0	0	2,170	179	
Anthrax	0	0	0	0	0	0	34	0	0	0	0	0	0	0	0	0	0	0	0	0	34	0
Measles	0	0	0	0	504	6	0	0	0	0	0	0	0	0	0	0	0	0	0	0	504	6
Typhus	90	3	0	0	0	0	0	0	0	0	0	0	8	1	0	0	0	0	0	0	98	4
Typhoid F.	0	0	0	0	0	0	195	0	0	0	0	0	109	0	0	0	0	0	0	0	304	0
R. Fever	70	2	0	0	0	0	74	0	0	0	0	0	0	0	0	237	4	0	0	381	6	
ADD	0	0	10	0	0	0	0	0	0	0	0	0	0	0	0	0	0	0	0	0	10	0
Bloody Diarrhea	0	0	0	0	0	0	216	4	1189	42	0	0	0	0	0	0	0	0	0	0	1,405	46
Malaria	0	0	0	0	0	0	0	0	64	6	0	0	4684	16	0	0	0	0	0	4,748	22	
Whooping Cough	0	0	0	0	0	0	0	0	0	0	0	0	275	0	0	0	0	0	0	275	0	

D: Death

10.8.2 IDS REPORT,1995

A. Annual report by region compiled from weekly reportable diseases

Region	Cholera		Plague		Yellow Fever		M.Meningitis		Measles		AFP /Polio		NNT	
	Case	D	Case	D	Case	D	Case	D	Case	D	Case	D	Case	D
Tigray	0	0	0	0	0	0	317	22	85	0	64	0	3	2
Afar	0	0	0	0	0	0	59	16	39	0	5	0	0	0
Amhara	0	0	0	0	0	0	1502	100	931	24	105	0	22	1
Oromiya	0	0	0	0	0	0	557	56	454	2	130	0	8	1
Somali	0	0	0	0	0	0	153	0	1698	30	33	0	6	0
Benishangul	0	0	0	0	0	0	102	15	36	0	5	0	0	0
SNNP	0	0	0	0	0	0	244	18	308	1	71	0	17	6
Gambella	0	0	0	0	0	0	2	0	0	0	7	0	0	0
Hareri	0	0	0	0	0	0	21	0	17	1	1	0	0	0
Dire Dawa	0	0	0	0	0	0	70	5	11	0	2	0	0	0
Addis Ababa	0	0	0	0	0	0	95	0	218	0	21	0	4	0
National	0	0	0	0	0	0	3122	232	3797	58	444	0	60	10

B. Annual report by region compiled from monthly reportable diseases

Region	B. Dysentery		Malaria		Rabies		T.Fever		R.Fever	
	Case	D	Case	D	Case	D	Case	D	Case	D
Tigray	31545	63	156675	350	926	2	413	3	116	3
Afar	5528	0	59790	48	10	0	288	0	25	0
Amhara	4936	59	90225	703	275	36	5216	77	3101	21
Oromiya	16981	23	127057	320	1788	9	12392	15	3251	31
Somali	17906	208	42570	375	7	0	524	1	0	0
Benishangul	3963	0	67721	62	1	0	1142	1	29	0
SNNPR	4542	13	101931	370	128	0	6188	5	1150	20
Gambella	2288	3	26734	71	3	0	318	1	0	0
Hareri	642	8	8841	82	0	0	50	1	29	2
Dire Dawa	1264	1	6526	27	62	0	10	1	248	5
Addis Ababa	2926	1	1779	1	11	0	3907	0	1233	0
National	92521	379	689849	2409	3211	47	30448	105	9182	82

D: Death

C. Annual report by region compiled from quarterly reportable diseases

Region	AIDS		G. Worm		TBC		Leprosy		STDs	
	Case	D	Case	D	Case	D	Case	D	Case	D
Tigray	444	10	0	0	4635	35	213	3	7250	0
Afar	126	2	0	0	1110	4	12	0	1048	0
Amhara	873	56	0	0	10103	631	244	0	2856	0
Oromiya	1683	8	0	0	18204	223	1118	0	3902	0
Somali	48	7	0	0	3920	59	4	0	1639	0
Benishangul	130	0	0	0	163	10	18	0	680	0
SNNPR	562	0	11	0	7202	54	158	0	2052	0
Gambella	58	0	30	0	553	25	91	0	752	0
Hareri	405	0	0	0	633	6	23	0	995	0
Dire Dawa	607	14	0	0	1314	59	0	0	257	0
Addis Ababa	2197	22	0	0	14472	225	326	0	6516	0
National	7133	119	41	0	62309	1331	2207	3	27947	0

10.9 REGIONAL REPORTED HIV/AIDS CASES

Region	Cases						
	1997 G.C.	1998 G.C.	1999 G.C.	2000 G.C.	2001 G.C.	2002 G.C.	Cum. Total
Tigray	1,087	789	1,156	1,328	1,825	867	7,052
Afar					155	420	575
Amhara	9,496	321	2,054	1,044	1,074	1,474	15,463
Oromiya	12,863	3,065	3,248	2,371	2,640	1,533	25,720
Somali	17			35	27	11	90
Benishangul		129	374	28	63	47	641
SNNPR	4,453	690	1,028	1,688	1,149	612	9,620
Gambella	102	44	73	93	89	21	422
Hareri	1,828	708	157	318	482	237	3,730
Addis Ababa	28,681	4,080	21,149	7,936	6,916	4,427	73,189
Dire Dawa	2,234	424	623	238	213	121	3,853
Total	60,761	10,250	29,862	15,079	14,633	9,770	140,355

11. OUTPUT FROM HEALTH PROFESSIONAL TRAINING SCHOOLS

11.1 SUMMARY OF GRADUATES

Professions	1991		1992		1993		1994		1995	
	BS	F	BS	F	BS	F	BS	F	BS	F
Medical Doctor	136	14	152	8	128	11	152	18	182	23
Health Officer	79	9	157	27	181	27	183	26	181	36
Pharmacist	34	1	31	0	54	10	17	7	50	2
Nurse B.Sc.	27	6	25	4	31	13	28	9	33	13
Senior Clinical Nurse	588	225	364	111	711	234	433	171	644	251
Junior Clinical Nurse	348	147	512	180	882	344	669	326	255	162
Senior Public Health Nurse	140	43	209	67	155	44	124	73	173	85
Junior Public Health Nurse	152	61	131	38	106	18	70	29	46	20
Senior Mid Wife Nurse	53	29	36	23	87	43	56	17	41	16
Junior Midwife Nurse	108	58	122	72	192	103	140	117	46	46
Senior Pharmacy Technician	34	6	67	14	101	13	99	21	187	29
Junior Pharmacy Technician	29	7	62	18	105	23	47	12	59	18
Laboratory Technologist	13	0	21	0	15	2	23	3	25	1
Senior Laboratory Technician	195	26	211	27	249	16	223	20	302	21
Junior Laboratory Technician	75	23	79	41	199	57	69	13	41	14
Environmental Health Technologist	20	0	20	0	21	0	26	1	28	0
Senior Environmental Health Technician	172	12	161	24	145	14	135	32	198	13
Senior Radiography Technician	18	0	0	0	19	2	0	0	29	4
Total	2221	667	2360	654	3381	974	2494	895	2520	754

11.2 DISTRIBUTION OF HEALTH TRAINING SCHOOLS (Type & Number of graduates)

A. Graduates of Health Professionals from Higher Education

No	Training School		Award	Graduates					
	Name	Type		1993		1994		1995	
				BS	F	BS	F	BS	F
1	Addis Ababa University	Medicine	MD	57	3	50	4	62	10
		Pharmacist	B.Pharm.	54	10	13	7	50	2
		Anaesthesiology	B.Sc.			4			
		Clinical Nurse	Diploma	110	30	86	49	94	46
		Mid wife Nurse	Diploma	17	8	16	4	33	19
		Laboratory Tech	Diploma	57	4	44	6	70	2
		Radiographer Technician	Diploma	19	2			29	4
		Pharmacy Technician	Diploma				70	17	
2	Gonder College of Medical Science	Medicine	MD	34	4	49	4	59	7
		Health officer	B.Sc.	42	4	46	7	47	9
		Clinical Nurse	Diploma	81	9	68	38	50	24
		Public Health Nurse	Diploma	45	9	25	21	40	12
		Midwife Nurse	Diploma	29	7			31	12
		Lab.technician	Diploma	63	3	48	5	96	9
		Environmental Health	Diploma	44	3	38	4	49	3
		Pharmacy Tech.	Diploma			42	6	98	17
3	Jimma University (Institute of Health Science)	Medicine	MD	37	4	53	10	61	6
		Health officer	B.Sc.	54	5	47	4	51	8
		Post Basic Nursing	B.Sc.	31	13	28	9	33	13
		Post Basic Env. Health	B.Sc.	21	0	26	1	28	0
		Post Basic Lab-Techn.	B.Sc.	15	2	23	3	25	1
		Clinical Nurse	Diploma	32	7	20	9	27	17
		Public Health Nurse	Diploma	37	13	16	10	38	22
		Pharmacy Tech.	Diploma	82	8	37	9	79	8
		Lab-technician	Diploma	46	4	46	3	40	4
		Environmental Health	Diploma	36	6	35	11	50	5
4	Alemaya University	Health officer	B.Sc.	50	10	47	12	40	13
		Public Health Nurse	Diploma	43	9	40	22	54	34
		Lab-technician	Diploma	47	4	42	3	56	2
		Environmental Health	Diploma	36	5	25	6	45	1
5	Debub University	Health officer	B.Sc.	35	8	43	3	43	6
		Clinical Nurse	Diploma	15	1	47	11	49	9
		Public Health Nurse	Diploma	30	13	43	20	41	17
		Lab.technician	Diploma	36	1	43	3	40	4
		Environmental Health	Diploma	29	0	37	11	54	4
Total				1364	209	1231	315	1732	367

B. Graduates of Health Professionals from Senior Training Schools

No	Training School		Award	Graduates					
	Name	Type		1993		1994		1995	
				BS	F	BS	F	BS	F
1	Nekemte	Clinical nurse	Diploma	67	21	70	20	65	13
2	Mekele	Clinical nurse	Diploma	126	45	38	14	85	54
		Pharmacy tech.	Diploma	19	5	20	6	19	2
		Ophthalmic nurse	Diploma					10	4
3	Assela	Clinical nurse	Diploma	85	32	74	23	81	28
4	Harar	Clinical nurse	Diploma	48	12	58	26	71	29
		Mid-wife nurse	Diploma	14	11	13	6	14	11
5	Yirgalem	Clinical nurse	Diploma	20	11	30	7	32	8
6	Awassa	Mid-wife nurse	Diploma	53	7	27	7	27	5
		Clinical nurse	Diploma					80	14
		Lab. technician	Diploma					26	4
7	Menilik II	Clinical nurse	Diploma					49	24
8	Debretabor	Clinical nurse	Diploma					112	28
Total				432	144	330	109	671	224

C. Graduates of Health Professionals from Junior Training School

No	Training School		Award	Graduates					
	Name	Type		1993		1994		1995	
				BS	F	BS	F	BS	F
1	Arbaminch	Clinical nurse	Certificate	70	12	35	8	0	0
		Public Health Nurse	Certificate			22	8	31	18
2	Hosanna	Clinical nurse	Certificate	62	13	54	27	12	5
		Mid-wife Nurse	Certificate	37	15	48	26	18	18
3	Shashemene	Clinical nurse	Certificate	15	3	31	21	35	15
		Public Health Nurse	Certificate	124	61	14	5	15	6
		Mid-wife Nurse	Certificate	34	5	20	19	32	23
		Pharmacy Tech.	Certificate	42	18	29	11	10	4
4	Mettu	Lab. Technician	Certificate			17	4	63	46
		Clinical nurse	Certificate	15	6	30	12	24	11
5	Goba	Public Health Nurse	Certificate	59	37	8	5	28	28
		Clinical nurse	Certificate	136	60	62	39	63	46
5	Goba	Public Health Nurse	Certificate	12	1	20	7	24	11
		Mid-wife Nurse	Certificate	41	33	33	33	28	28

Cont....

No	Training School		Award	Graduates					
	Name	Type		1993		1994		1995	
				BS	F	BS	F	BS	F
6	Borena	Clinical nurse	Certificate	154	48	49	17	53	30
7	Dessie	Clinical nurse	Certificate	58	30	108	21		
		Pharmacy tech.	Certificate			21	5	30	0
8	Axum	Clinical nurse	Certificate	56	20	163	150	0	0
		Mid-wife Nurse	Certificate	29	6	32	32		
9	Bahir Dar	Clinical nurse	Certificate	19	13	75	18	30	8
		Pharmacy tech.	Certificate	15	1	18	1	24	3
		Lab. technician	Certificate	19	2	21	1	26	8
10	Jijiga	Clinical nurse	Certificate	50	7	48	9	NA	NA
		Midwife nurse	Certificate	6	6	7	7	NA	NA
		Lab. technician	Certificate			10	1	NA	NA
11	Debreberhan	Clinical nurse	Certificate	27	11	26	5	46	37
12	Gambella	Clinical nurse	Certificate			14	4	NA	NA
		Public health nurse	Certificate			6	4	NA	NA
13	Pawie	Clinical nurse	Certificate					34	11
		Public health nurse	Certificate					25	4
		Midwife nurse	Certificate					22	14
Total				1080	408	1021	500	673	374

D. Graduates of Health Professionals from Private Training Schools

No.	Training School		Award	1993		1994		1995	
	Name	Type		BS	F	BS	F	BS	F
1	Selam Nurses College	Nursing	Diploma					54	45
Total								54	54

11.3 POST BASIC AND POST GRADUATES

Training Programme	Training Type	Training Institution	Number of Graduates					
			1993		1994		1995	
			BS	F	BS	F	BS	F
<i>Post Graduate Studies</i>	Anesthesiology	<i>Faculty of Medicine</i>	2	0	1		1	
	Public Health		15	0	30	5	19	2
	Internal Medicine		6	0	10		10	0
	Obstetrics & Gyn.		9	0	8	0	8	0
	Ophthalmology		3	1	4	0	6	0
	Orthopedics		1	0	2	0	3	0
	Pathology		1	0	4	0	1	0
	Pediatrics & Child Health		9	1	10	2	10	0
	Surgery		11	0	13	0	12	0
	Radiology		4	1	5	1	32	4
	Pharmaceutics		0	0	4	0	1	0
Total		61	3	91	8	103	6	
<i>Post Basic Diploma</i>	Psychiatry Nurse	Amanuel Hosp	27	15	27	18	22	13
	Nurse Anesthesia*	Black Lion Hosp.	26	12	-	-	-	-
	Ophthalmic Nurse	ALERT Hosp.	21	11	20	18	0	0
	Total		74	38	47	36	22	13

* Upgraded to BSc. level

GLOSSARY

Age dependency ratio

The ratio of persons in the “dependent” ages (under 15 and older than 64 years) to those in the “economically productive” ages (15-64 years) in a population.

Antenatal coverage

A coverage to a health institution made by a pregnant woman to be sure that she has a safe pregnancy.

Average household size

The mean number of members per household

Child mortality

The probability of dying between exact age one and the fifth birth day per 1000 children surviving to the first birth day.

Child woman ratio

The number of children under age five per 1,000 women of childbearing age in a given year. This measure is used as a rough fertility indicator, especially when detailed data on births are lacking.

Contraceptive prevalence rate

The proportion of eligible women (15-49 years old) who got contraceptive service.

Crude birth rate

The number of births in a population during a specified period divided by the number of person-years-lived by the population during the same period. It is frequently expressed as births per 1,000 population.

Crude death rate

The number of deaths in a population during a specified period divided by the number of person-years-lived by the population during the same period. It is frequently expressed as births per 1,000 population.

Delivery attended

The service given for a pregnant woman during labor; management of normal delivery and detection of complications, management of risk cases in labor and complicated cases.

Demography

The study of population and its characteristics, with reference to such factors as size, age structure, density, fertility, mortality, growth and social and economic variables.

Discharged patient

The number of patients who are discharged from the health institution (whether it is dead or alive) after being diagnosed and/or treated.

Drug shop

Shall mean an establishment which offers for sale to the public. Such medical preparations, cosmetics nursing and sanitary articles, dietetic products and other articles as approved for the purpose by the Ministry but does not engage in the compounding preparation or manufacture of any medical preparation.

Enrolment ratio

The number of students attending a given school, divided by the total number of persons of the age normally in school at that level.

Fully immunized

A child of age under one who has taken all types of antigens completely.

General fertility rate

The number of births occurring in a given year per 1000 women in the reproductive ages (i.e. women aged 15-49).

Health center

Establishment which provides both preventive and curative out-patient care. Health Centre is also responsible for training CHAs & TBAs.

Health post

One of the satellite facility in the Primary Health Care Unit

Health stations

The smallest health units in the conventional Health Service structure and are staffed with 1-3 health assistants.

Higher clinic

Staffed at least by a general medical practitioner, a specialist and assisted by various specialists serve for general outpatient clinics. For emergency

and delivery this clinic has up to 5 beds.

Hospital

An establishment with at least 25 beds that provides general medical care round the clock. It is at least equipped with basic laboratory, X-ray and basic treatment facilities. It is staffed with at least one medical practitioner.

Household

A single person living alone or a group voluntarily living together, having common house keeping arrangements for supplying basic living needs, such as principal meals. The group may consist of related or unrelated persons.

Infant mortality rate

The ratio of the number of deaths under one year of age occurring in a given year to the number of births in the same year. Also used in a more rigorous sense to mean the number of deaths that would occur under one year of age in a life table with a radix of 1,000.

Infant mortality

The probability of dying between birth and age one per 1000 live births in a given year.

In-patient

A patient who is admitted and occupy bed in a health institution for diagnosis and/or treatment.

Life Expectancy at Birth

The average number of years a newborn infant can expect to live under current mortality levels.

Live birth

The complete expulsion or extraction from its mother of conception, irrespective of the duration of pregnancy, which after such separation shows any evidence of life.

Lower clinic

Staffed at least by a health assistant or a nurse and serve for general outpatient clinic.

Maternal mortality rate

A measure of a woman's risk of dying from causes associated with pregnancy.

Medium Clinic

Staffed at least by health officer or general medical practitioner & serve for general medical services.

Morbidity

The extent of illness, injury or disability in a population.

Out-patient

A patient who receive ambulatory care (examination and treatment) with out being admitted or occupying a bed.

Pharmacy

Any store, shop or other place in which medicinal preparation are compounded or prepared and dispensed or sold to the public.

Postnatal visits

Visits made by a mother to a HCU or visited by a health worker (at home) within the first 45 days after giving birth.

Potential health service coverage

The population covered in percentage based on the existing health centers and health stations in catchment's area.

Rate of national increase

The difference between the births and deaths occurring during a given period divided by the number person-year lived by the population during the same period. This rate, which specifically excludes changes resulting from migration, is equal to the difference between the crude birth rate and the crude death rate.

Rural drug vendor

The lowest level of medicinal retail outlet that dispenses medical preparations as approved for this level by the Ministry, but does not engage in compounding preparation or manufacturing of any medical preparation.

School enrolment

The number of students who are enrolled and attend various educational institutions.

Sex ratio

The number of males in a population or specific sub-population, divided by corresponding number of females, conventionally multiplied by 100.

Special clinic

Provides specific medical interventions such as medical, surgical, obstetric gyn, ophthalmology, etc. and is assisted by specialists in various disciplines.

Total fertility rate

The average number of children that would be born per woman of all women lived to end of their childbearing years and born children according to a given set of age specific fertility rates.

Under-five mortality

The probability of dying between birth and age five per 1000 live births in a given year.

Under 5 children

Under 5 year children visits to health institution for monitoring of growth and development, screening of risk cases, and for management of disease or mal development.

Vital events

Births, deaths, marriages and divorces.

GNI PPP per capita

GNI PPP per capita is Gross National Income in purchasing power parity (PPP) divided by midyear population. GNI PPP refers to Gross National Income converted to “international” dollars using a purchasing power parity conversion factor. International dollars indicate the amount of goods & services one could buy in the United States with a given amount of money.